

Facing History and Ourselves



at 40.

Table of Contents

LETTERS / P. 4

Messages from Roger Brooks, President and Chief Executive Officer; Julie Leff, Chair of the Board of Directors; Jeffrey J. Bussgang and Seth A. Klarman, Co-Chairs of the Leadership Council.

HIGHLIGHTS / P. 16

Read about the generosity and commitment of our enthusiastic supporters.

PROFILES / P. 22

Learn about what we're up to and where we're going.

FINANCIAL REPORT / P. 34

GIFT REPORT / P. 38

Meet the donors and contributors who make our work possible.



Facing History and Ourselves at 40.

Facing History and Ourselves gives educators and youth the skills to wrestle with today's difficult issues through the lens of history.

Teachers work closely with students to make personal connections between their past and their present, between others and themselves. Facing History and Ourselves aspires to a world shaped by knowledge, empathy, and action, rather than bigotry, antisemitism, and racism. We believe that by empowering our youth, they will build a more engaged, moral, and compassionate society.

Our youth will change the world for the better if we help them pave the way.



A message from Roger Brooks, President and Chief Executive Officer and Julie Leff, Chair of the Board of Directors

Facing History and Ourselves is at a pivotal moment.

As we mark our 40th year, we have the opportunity to reflect on our successes, build on our history, and think expansively about how our unique strengths can adapt to a world where education is evolving rapidly.



The organization has undertaken a robust strategic planning process this year, spanning eight months and engaging more than 200 members of our Boards and Leadership Council and more than 120 members of our staff. Together, we are ready to navigate Facing History into the future.

This extensive planning process has reinforced the necessity and power of our work while also guiding us to transition Facing History from a traditional nonprofit into a social enterprise that provides even greater value for the education marketplace. In order to support teachers, students, and schools with greater efficiency and impact, you can expect to see us scale our work with educators in both breadth and depth. We will create prototypes to test the potential for expanding in-person, digital, and self- and peer-service approaches. We will also build a more intentional emphasis on marketing that allows us to expand our reach, partner with new school districts, and increase our public brand and reputation. To support this critical work, we will create a scalable funding model that incorporates a mix of private and public sources.

Facing History looks toward the future with confidence and excitement, knowing we are building on 40 years of excellence. We extend our heartfelt thanks to each of you for stewarding the mission of this extraordinary organization into the next 40 years. Together, we can pave the way to a world shaped by knowledge and caring.

Facing History looks toward the future with confidence and excitement, knowing we are building on 40 years of excellence.

A message from Jeffrey J. Busgang and Seth A. Klarman,
Co-Chairs of the Leadership Council

Forty years ago, a social studies teacher had an innovative vision:

to study historical moments of group and individual actions to illuminate the decisions young people face in their day-to-day lives. This idea has long since gone global.



We are proud to say that Margot Stern Strom’s inspiration is propelling us forward, under the leadership of Roger Brooks and Julie Leff, toward our next four decades of impact on students, teachers, and schools around the world.

Facing History teaches adolescents—the next generation—about the fragility of democracy, the challenges of winning it, the constant effort needed to maintain it, and the ongoing opportunities to continue to perfect it. It also explains the dangers of dividing or scapegoating people or groups and of encouraging hatred or violence. Facing History turns students into citizens by helping them become upstanders. Rigorous assessments of our work demonstrate that changes in the thinking of adolescents who are taught Facing History endure beyond the length of the curriculum to become deeply rooted for the years and even decades that follow.

America’s founding generation made our democracy their own when they fought for it. Facing History students make democracy their own when they choose to stand up, strengthen, and improve it. We are proud of Facing History’s 40 years of accomplishments, committed to the important work that still needs to be done, and confident that the organization is on track to reach even more teachers, the next cohort of students, and incremental schools to bring excellent and rigorous education that matters to the next generation of citizens.

Facing History students make democracy their own when they choose to stand up, strengthen, and improve it.





Educators pave the way to understanding.

Educators who connect with Facing History and Ourselves are exposed to a rigorous and challenging curriculum.

They experience first-hand the lessons they will soon teach to their students. Lessons created by Facing History and Ourselves have a universal application.

92%

of Facing History teachers report that Facing History helped their students participate in respectful conversations about different topics

Students pave the way to the future.

Facing History students gain critical thinking skills, empathy and tolerance, a sense of civic responsibility, and the belief that they can make a difference in the world.

81%

of students agreed that Facing History increased their capacity to recognize racism, antisemitism, and other forms of bigotry





Schools and classrooms pave the way to safe spaces.

Facing History schools and classrooms are more respectful, reflective, and participatory—necessary conditions for deep learning.

94%

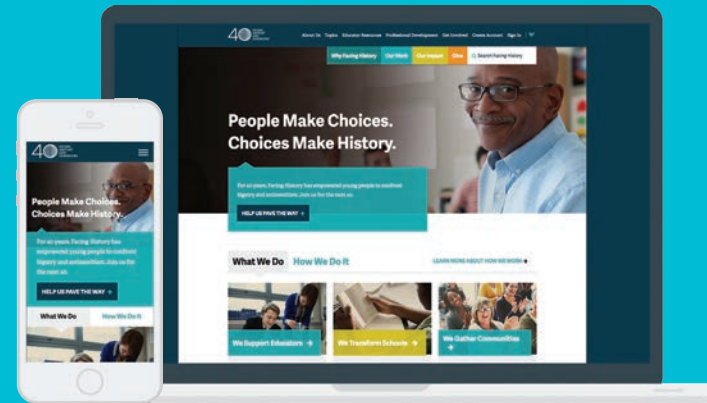
Facing History students were 94 percent more likely than other students to report that their class motivated them to learn.

Highlights

In our 40th year, Facing History and Ourselves is perfectly poised to enter its next great era.

"Thanks so much to all of you for your work to build a better world, and I look forward to everything you will continue to achieve in the years ahead."

MICHELLE OBAMA, FIRST LADY OF THE UNITED STATES



In 2016, we expanded our digital reach, releasing an all-new facinghistory.org featuring new tools for our educators.

@facinghistory strategies always engage my students and promote student collaboration. Check them out!

HISTORY TEACHER, MISS MAYER

Giving back to our community is important to us. We're proud to support @facinghistory as they work in Memphis & around the world!

METROPOLITAN BANK OF MEMPHIS

@facinghistory I'd never heard of Raphael Lemkin or Benjamin Ferencz before looking through your units! Thanks for the important work you do!

HISTORY TEACHER, MR. EMRICH

nearly

1.5 million

visits to facinghistory.org

53,000+

Facebook followers

17,000

Twitter followers

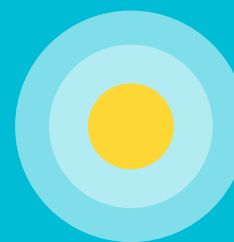
Facing History also works on a larger scale with administrators and department chairs so they can introduce our content, themes, and pedagogy to other teachers in their department, school, or district.

When Facing History works with an entire school to offer curriculum development, school-wide programming, and staff engagement, the result is a school that takes seriously issues of ethics, social responsibility, prejudice, and justice, and shares a common language to help them identify and discuss these issues in the classroom, in student advisory, in staff meetings, and in the broader community.

Facing History helps teachers move their students from thought to judgment and ultimately to participation. Through that process, students and their teachers build a community of thinkers.

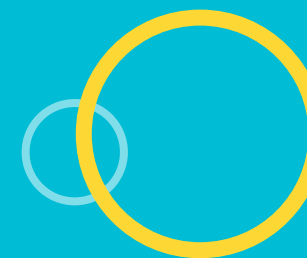
Over the next five years, we will:

In FY 2016
Facing History
reached
48,000
educators in
134 countries



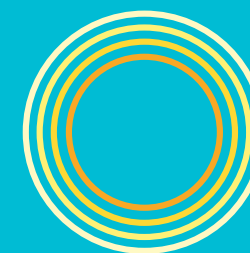
**STRENGTHEN OUR
CORE WORK**

Improve content offerings;
strengthen engagement
with teachers.



**SCALE OUR
IMPACT**

Strengthen digital
outreach; conduct rapid
prototyping tests to inform
the development of new
curriculum and services for
teachers.



**AMPLIFY OUR
VOICE**

Engage the general public
through clearly targeted civic
programming; use media
outlets to increase our role as
thought leaders and experts;
conduct market research to
discover and cultivate new
audiences.

Our District Partnerships

The Facing History and Ourselves district partner model uses a two-pronged approach to yield the greatest impact on school district climate and academic success. A cadre of teachers across content areas engages students in academically rigorous Facing History units that allow them to tackle today's difficult issues through the lens of history.

At the same time, Facing History staff works with administrators and educators to help build an environment of trust and respect. When these two approaches are working together in a school district, we can create a safe environment for students to lean into the discomfort, dig deep into their own beliefs, and understand the impact of choices in their daily lives. Facing History and Ourselves is privileged to partner with the following school districts.

TORONTO REGIONAL OFFICE

Hamilton Wentworth District School Board
Peel District School Board
Toronto District School Board
Waterloo Region District School Board

CLEVELAND REGIONAL OFFICE

Cleveland Metropolitan School District

MEMPHIS REGIONAL OFFICE

Hamilton County Department of Education
Jefferson County Public Schools (KY)
Shelby County Schools

NEW ENGLAND REGIONAL OFFICE

Boston Archdiocese of Catholic Schools
Cambridge Public Schools
Bedford Public Schools
Boston Public Schools
Brookline Public Schools
Everett Public Schools
Framingham Public Schools
Natick Public Schools
Newburyport Public Schools
Norwood Public Schools
Randolph Public Schools
Salem Public Schools
Somerville Public Schools
Wayland Public Schools

NEW YORK REGIONAL OFFICE

Brewster Central School District Office
Byram Hills Central School District
Elizabeth Board of Education (NJ)
Scarsdale Public Schools

SAN FRANCISCO REGIONAL OFFICE

Antioch Unified School District
South San Francisco Unified

ADDITIONAL DISTRICT PARTNERSHIPS

Baltimore City Public Schools
Harmony Schools (Houston, TX)
Miami Dade County Public Schools
Sarasota County Schools

“Facing History exposes students to diverse opinions and offers a safe space to exercise their voices, giving them the confidence and courage to be the upstanders and thoughtful leaders of the future.”

CAROL JOHNSON
REGIONAL EXECUTIVE DIRECTOR OF
NEW LEADERS COUNCIL AND FORMER
SUPERINTENDENT OF BOSTON,
MEMPHIS, AND MINNEAPOLIS
PUBLIC SCHOOLS

Profiles

Facing History helps students confront today's difficult issues with empathy—empowering youth to make compassionate and informed choices. The following stories feature just a few of the extraordinary supporters who are helping us pave the way for them.

"Facing History helps more young people become the upstanders that our world needs so desperately right now."

**TOM WILSON, CHAIRMAN AND CHIEF EXECUTIVE OFFICER
THE ALLSTATE CORPORATION**

Paving the road to the future.



The driving force behind the Baskin Family Foundation is simple but powerful: to make a difference. Judy Wise, her husband Sheldon Baskin, their children Jon and Kim, and their niece and nephew Tamar Yehoshua and Rafe Offer and daughter Shir Yehoshua make philanthropy a family affair, prioritizing education and social justice as their main causes.

"My husband and I have been philanthropic for a very long time," said Wise. "We wanted to embed those values in our children."

Throughout the years, Wise, Baskin, and their family have remained steadfast supporters of Facing History and Ourselves, including sponsoring the original launch of our seminal case study, *Facing History and Ourselves: Holocaust and Human Behavior*, in honor of Shelly's father Sam Baskin. Their belief in our mission runs deep; Judy opened the Chicago office and served as the director for 13 years. She worked with local advocates to open our London office and to support our work in Northern Ireland, South Africa, and globally. Judy currently serves on our Board of Directors.

What keeps the family so committed to Facing History is their passion for education and their understanding that students need to dig deep into their own beliefs to understand the world around them.

"Facing History prepares students to be conscious and constructive citizens, which I think we need a whole lot more of," said Wise.

"It empowers students to really think about how they can make a difference and gives them some tools so they don't feel left out and hopeless."

Their support of our Chicago and London programs as well as Facing History's work around the world, continues to fuel our mission and vision.



Paving the road to understanding.

Bobby White returns to his Facing History roots after more than a decade.

A former history teacher, White is now the founder and CEO of Frayser Community Schools in Memphis, Tennessee, and he is partnering with Facing History to transform school culture with the Memphis Neighborhood Schools Project. Starting with the Martin Luther King Jr. College Preparatory High School, he hopes to expand the project's reach with Facing History's help.

"Facing History is the piece we've been missing," he says. "We needed a common language around how to learn to believe in yourself by understanding others."

Martin Luther King Jr. College Preparatory High School was taken over by Frayser Community Schools in 2014 after years of low performance. White wants to inspire his students to build a stronger community, and to foster empathy for one another while striving for high academic achievement. To do this, he believes they need to better understand themselves and one another.

"Once they have knowledge of self and others, along with the historical perspective of what others

have gone through, they'll be able to say, 'I get it. I know why we are where we are,'" he says.

That's why White is using Facing History's holistic approach to building safe and reflective schools. Through curriculum development, school-wide programming, and whole-staff engagement, teachers and students can share a common language to identify and discuss issues of ethics, social responsibility, prejudice, and justice together as a community. Students can then make personal connections between their past and their present and be empowered to improve their school culture.

Currently, teachers are participating in ongoing Facing History professional development sessions to start developing that common language. White says that teachers sometimes struggle to connect with their students, but this project serves as a way to bridge those gaps.

He hopes Facing History can be brought to other schools across the country that have experienced similar performance challenges. For now, he's leading the way in Memphis so we can all see what school-wide transformation looks like.



Paving the road to social justice.

Twenty years ago, Lynda Bussgang started working at Facing History and Ourselves. For Lynda and her husband Jeff, this turned into a long-standing commitment to the organization. The two of them "fell in love" with Facing History, she says. Once Mrs. Bussgang moved on professionally, they both found ways to stay connected.

Both became involved in the organization's programs. Mrs. Bussgang led efforts like the Raising Ethical Children program, a national series that examines how to apply some of Facing History's key concepts and values to parenting, and the online teacher-training program. Mr. Bussgang served on multiple board committees and currently serves as a member of the Board of Directors and co-chair of the Leadership Council. Mrs. Bussgang is a member of the Leadership Council and the New England Advisory Board.

"We were in our twenties when we got involved," says Mrs. Bussgang. "We have 'grown up' with Facing History lessons at the core of our personal and professional lives."

They credit Facing History with helping them form their philosophy and approach to raising their three children. Especially in today's world, where technology is substituting for face-to-face

conversations, the Bussgangs see an ever-increasing need for young people to practice open dialogue in order to connect in a world that is seemingly so divided.

"We hope that we're raising our three teenagers as moral philosophers with a passion for social justice and a profound sense of empathy for others," says Mr. Bussgang. "But we want all young people to have the opportunity to build their own moral compasses."

That's why the Bussgangs continue to support Facing History. They value the organization's approach to equipping educators and youth with skills that allow them to wrestle with today's difficult issues through the lens of history—critical skills students need to help build a more engaged, moral, and compassionate society. As Mr. Bussgang says, "The world needs Facing History now more than ever."



Paving the road to inclusion.

Celebrating diversity in all of its forms is important to Caretha Coleman and her husband Ken. When she was first introduced to Facing History in 2003, she immediately felt connected to the mission.

Coleman envisions a world where young people of all backgrounds can take an active part in their future. And that means giving them the opportunity to participate in Facing History's programs. For her, Facing History is changing the reality of today's divisive world so students can use their voice and feel empowered to make a difference.

She also believes it's a group effort to achieve this. With 30 years in the technology industry, she sees the role businesses can play to build strong communities for young people to succeed. And the need for Facing History in this space has never been greater, especially in a society that is often fractured along lines of race, religion, and politics.

"When you look at the events of the world today," she says, "Facing History's time has come. The conversation the organization has been able to put on the table about bias throughout the years is something I hope corporations welcome, embrace, and encourage."

Her generosity as a donor, her commitment to leadership as a member of the Board of Directors, and her role as a member of the San Francisco Bay Area Advisory Board demonstrate that giving back comes in multiple forms. This stems from her understanding that we all need to help one another in whatever way we can.

"I hope I'm living my legacy every day" she says. "I want to give back—in small ways and in big ways."

Caretha Coleman pictured center.

Paving the road to partnership.

In Chicago, 20 schools are creating positive change from the inside out, thanks to the Aon Foundation. As one of the first to commit to funding the Chicago Growth Initiative's Partner School Program, Aon has helped bring together school administrators, teachers, students, and Facing History staff to impact the culture of a whole school.

With its commitment to making the communities where it works stronger, Aon is helping to prove that a positive school culture drives academic success.

"It takes a community effort to make these transformational changes," says Carolyn Frost, Vice President and Executive Director of the Aon Foundation. "Facing History's mission resonates with our goals of investing in the next generation through educational and youth development programs."

At the heart of this initiative, entire school communities are empowered to foster social-emotional learning while also providing challenging academic content to students. Using our whole-school approach, educators receive Facing History's professional development training and ongoing coaching and support to provide students with a safe space and rigorous curriculum that enables them to understand the impact of choices in their everyday lives.



For the Aon Foundation, which promotes access to excellence in education, investing in youth is investing in the community.

"Young people are the next generation of talent," says Frost. "When you invest in their education, you invest in the economic stability and viability of that community."

The Aon Foundation understands the importance of nonprofit partnerships, especially those that encourage an active and engaged citizenry. "There's a lot more work that needs to be done," says Frost, "but we can change the world for the better, one community at a time."

Their support of the Chicago Growth Initiative shows that it's not only possible to make that difference, but that it's already happening.



STUDENTS AT FACING HISTORY NEW TECH HIGH SCHOOL IN CLEVELAND, OHIO, PARTICIPATE IN A TEAM-BUILDING EXERCISE IN

APRIL 2016. NEW TECH INFUSES FACING HISTORY'S CONTENT AND APPROACH THROUGHOUT THE SCHOOL.

STAFF SPOTLIGHT:

Dimitry Anselme & Karen Murphy

Facing History engages students and teachers from around the world to examine complex themes such as identity, discrimination, and belonging.

This international work is supported through our offices in London and Toronto and through the dynamic teamwork of Karen Murphy, our international director, and Dimitry Anselme, our director of staff engagement for global programming.

Murphy and Anselme have built partnerships with individuals and civil society organizations to expand our reach to educators and students in areas including:

- China
- France
- Northern Ireland
- South Africa

“Around the world, as in the United States, we are dealing with democracies that are fractured,” says Murphy. “There are fault lines, tensions, that can quickly erupt into violence, and these conflicts are over identity, membership, and belonging.”

“We can offer educators, and in turn their students, a different model of coexistence,” Anselme continues. “Rather than asking individuals to discard their identity and conform to a larger group, educators and their students can learn to listen, to be patient, and to be in dialogue with one another. In each area we work with, how this works can look different. We have to listen first, then we can equip the teachers with the best model for creating a classroom that allows for these conversations.”



“We can offer educators, and in turn their students, a different model of coexistence.”

DIMITRY ANSELME



Financial Report

Fiscal year 2016 was both a period of transition for Facing History, and a year in which we focused on our future as we committed substantial resources to building a strategic plan.

With guidance from consultants from the Monitor Institute, Roger Brooks and his team collaborated with a diverse group of our leaders to create a plan for Facing History’s growth over the next six years. This plan will enable us to reach four times as many teachers and students as we do today and will reduce the cost per teacher and student by about two-thirds.

During the year, we successfully completed our search for a new Chief Development Officer, hiring Jeremy Cramer, who brings his experience in education-related fundraising to our senior staff. Jeremy’s approach to the “art and science” of development, to the strengthening of relationships with existing donors, and to the identification, cultivation, and solicitation of new donors will underlie the financial component of the strategic plan.

Through fiscal 2016, Facing History’s financial condition continues to be strong despite having reported losses for the past two years. We ended the year with more than \$38 million in net assets and \$25 million in cash and investments, and we once again have received a 4-star rating from Charity Navigator. Our expenses were well controlled, and we continued to invest in expanding our impact and excellence in content, program delivery, and public engagement.

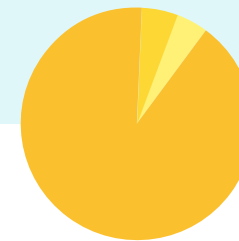
In addition to investing in the strategic plan, we were able to fund several projects with receipts on restricted gifts and grants carried over from prior years. Facing History’s financial leadership team, including the Finance Committee and internal staff, are committed to enhancing our budget process and programmatic security and accountability throughout our global organization.

On behalf of the Board of Directors and Leadership Council, I want to thank the members of the Finance, Audit, and Investment Committees and Facing History’s management and staff for all their extraordinary work. I also thank them for the unwavering support and continued commitment to the organization’s long-term financial sustainability and success.

Emily Levanthal
Chair, Finance Committee

Operating Revenue by Source

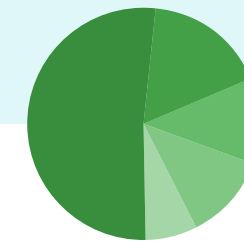
Contributions	90.6%	\$19,277,348
Fees and Sales	5.0%	\$1,052,961
Endowment	4.4%	\$941,410



- Contributions, 90.6%
- Fees and Sales, 5.0%
- Endowment, 4.4%

Expenses by Purpose

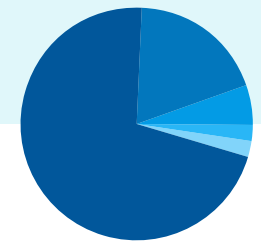
Program Teacher Prof. Devel.	52.0%	\$13,531,705
Program Content Devel.	11.8%	\$3,066,445
Program Public Engagement	17.1%	\$4,464,275
Administration	7.1%	\$1,843,816
Fundraising	12.0%	\$3,134,641



- Program–Teacher Prof. Devel., 52%
- Program–Public Engagement, 17.1%
- Fundraising, 12.0%
- Program–Content Devel., 11.8%
- Administration, 7.1%

Expenses by Category

Salaries, Taxes, Benefits	71.1%	\$8,523,432
Services and Materials	19.1%	\$4,980,167
Travel	2.0%	\$515,006
Occupancy and Office	5.4%	\$1,400,664
Depreciation	2.4%	\$621,613



- Salaries, Taxes, Benefits, 71.1%
- Services and Materials, 19.1%
- Occupancy and Office, 5.4%
- Depreciation, 2.4%
- Travel, 2.0%

Condensed Statement of Financial Position

	June 30, 2016	June 30, 2015
ASSETS		
Cash and cash equivalents	\$ 2,197,308	\$ 3,704,030
Investments	23,466,959	27,905,000
Accounts receivable and prepaid expenses	754,652	720,433
Pledges and grants receivable, net	11,035,559	11,460,880
Office equipment, leasehold improvements, and traveling exhibits - net	1,032,425	1,712,001
Total Assets	38,486,903	45,502,344
LIABILITIES AND NET ASSETS		
Liabilities		
Accounts payable and other liabilities	752,319	1,356,120
Net assets		
Unrestricted net assets	6,045,253	10,475,939
Temporarily restricted net assets	9,352,250	11,278,316
Permanently restricted net assets	22,337,081	22,391,969
Total Net Assets	37,734,584	44,146,224
Total Liabilities and Net Assets	\$ 38,486,903	\$ 45,502,344

Condensed Statement of Activities

	Year ended June 30, 2016	Year ended June 30, 2015
OPERATING SUPPORT AND REVENUE		
Contributions and special event revenue		
Unrestricted	\$ 8,604,048	\$ 13,808,180
Temporarily restricted	10,134,426	5,461,484
Permanently restricted	46,000	152,331
Total Contributions and Special Event Revenue	18,784,474	19,421,995
Contributions in-kind	492,874	478,302
Fees for program presentations	1,007,042	1,094,205
Sales of books and materials	45,919	54,072
Endowment distributions	941,410	803,500
Total Support and Revenue	21,271,719	21,852,074
OPERATING EXPENSES		
Program services	21,062,425	21,275,008
General administration	1,843,816	1,777,290
Fundraising	3,134,641	3,158,878
Total Expenses	26,040,882	26,211,176
CHANGE IN NET ASSETS		
Change in net assets from operations	(4,769,163)	(4,359,102)
Investment income and gains, net of amounts appropriated for operations	(1,379,449)	(469,802)
Gain/(loss) on fixed asset disposal and grant discount adjustment	(263,028)	(360,731)
Change in Net Assets	\$ (6,411,640)	\$ (5,189,635)



Gift Report

Our work is made possible through the commitment and generosity of our major donors and contributors. Their contributions help us pave the way toward cohesive communities and stronger democracies.

"Only a quarter of charities rated by Charity Navigator receive the distinction of our 4-star rating. This adds Facing History to a preeminent group of charities working to overcome our world's most pressing challenges."

MICHAEL THATCHER
PRESIDENT & CEO OF CHARITY NAVIGATOR

Sustaining Gift Program

For more than three decades, Facing History has engaged students in the study of history and ethical decision-making in order to teach civic responsibility, tolerance, courage, and compassion. With increasing demand from schools and teachers, and impact data that demonstrate the continued effectiveness of our work, Facing History depends on the increased investment of annual support from leadership donors to reach more students each year.

Multiyear commitments and annual gifts of \$100,000 or more are recognized in the Sustaining Gift Program, which has grown to include 80 families, foundations, and corporations. These major commitments are the cornerstone of our work and program planning. This list reflects commitments or gifts received from July 1, 2015 to June 30, 2016.

CHAIRMAN'S SOCIETY

Commitments of \$15,000,000 or more

The Richard and Susan Smith Family Foundation
Richard and Susan Smith
John and Amy S. Berylson and James Berylson
Jonathan Block and Jennifer Berylson Block
Robert Katz and Elizabeth Berylson Katz
Robert and Dana Smith
Debra Smith Knez, Jessica Knez and Andrew Knez

DIRECTORS' CIRCLE

Commitments of \$2,500,000 or more

Einhorn Family Charitable Trust
Michael L. Gordon
Lisa & Richard Perry

TRUSTEES' CIRCLE

Commitments of \$1,000,000 or more

Linda & Glenn H. Greenberg
The Karp Family Foundation
Stephen, Jill, Douglass & Jana Karp
The Klarman Family Foundation
Julie & Paul Leff
William & Lia Poorvu

Pritzker Pucker Family Foundation
Sidney and Edith Simon Family Holocaust Education Fund of the Jewish Federation of Cleveland

SUSTAINING CIRCLE

Commitments of \$500,000 or more
Anonymous (3)
Baskin Family Foundation - Judy Wise & Sheldon Baskin
Tom & Lisa Blumenthal
Jill Garling & Tom Wilson

The Jim Joseph Foundation
Maja Kristin Lisa & Jim Mooney
Jo Ann & Stuart C. Nathan
Loren Pack & Rob Beyer
Samberg Family Foundation

BENEFACTORS' CIRCLE

Commitments of \$250,000 or more
The Allstate Foundation
Aon
The Crown and Goodman Family
Nina & David P. Fialkow
Lori & Mark S. Fife

The Fischman Family, Steven & Nancy, Laura, Ben & Wendy
Rachel Goldstein* & James Elkind
Rita Halbright & Jonathan Och
Inter-Action, Canadian Heritage
Robert R. McCormick Foundation
NoVo Foundation
Sally & Saul J. Pannell
Jack and Harriet Rosenfeld Foundation
Edmond J. Safra Philanthropic Foundation
Karen Tucker & Jerry Avorn
Zell Family Foundation

LEADERSHIP CIRCLE

Commitments of
\$100,000 or more

Anonymous (4)

Vicki S. & William H.
Abrams

Ames Fund of the Ten
Ten Foundation

Jennifer Aubrey
Sam & Josée Bak

Nancy A. & Jon R.
Bauer

Booth Ferris
Foundation

Brown Rudnick LLP
Ronald & Ronni Casty

Jill & Alex Dimitrief
Sumner & Esther

Feldberg
Linda & Michael

Frieze
Donna & Jack

Greenberg
Nancy & Jeffrey Halis

Karen G. Harrison &
Walter G. Freedman

Hawk Foundation
The Heartstone

Foundation
The Janey Fund

Anne & Joseph Juster
Floy B. & Amos

Kaminski
Mark & Anla Cheng

Kingdon Foundation

Ruth Lazarus &
Michael S. Feldberg

John Lyon's Charity
The Marc Haas

Foundation
Linda & Judd Miner

Novack Family
Foundation

OneWorld Boston, a
Cummings

Foundation affiliate
Plough Foundation

Polk Bros. Foundation
Sue & Bernie Pucker

Norman Raab
Foundation

Righteous Persons
Foundation

Ricky & Mara Sandler
Seed the Dream

Foundation, Marcy
Gringlas and Joel

Greenberg
Elinor A. Seevak

Sydney & Stanley S.
Shuman

Trish & Glen Tullman
Family

Dora Z. & Arthur D.
Ullian

Kate & Shai Waisman

"Participating, hearing myself through the other educators, placing myself in the role of the student, allowing myself to continue to grow as a person through my Facing History experience, I go to work with a renewed hope."

SEMINAR PARTICIPANT, MEMPHIS

Individuals

Facing History and Ourselves gratefully acknowledges everyone who has made a gift to support our program. We recognize our multiyear donors who have made commitments of up to \$99,999 by italicizing their names in the listing. This list does not include gifts or pledges made after June 30, 2016, at the fall benefits in Los Angeles, Memphis, and New York City.

We take great care to honor donors' wishes regarding how they should be listed, particularly the wishes of family foundations. A number of these foundations will be found under the Corporations & Foundations listings.

The following individuals made gifts or pledges of \$1,000 or more to Facing History and Ourselves between July 1, 2015, and June 30, 2016. Included in this list are gifts to the Annual Campaign, which provides yearly operating support for Facing History, as well as contributions to Facing History Limited, Facing History and Ourselves in Canada, and our permanently restricted fund. Thank you to the many generous donors who enable us to continue bringing new ideas to educators and the young people they teach.

\$75,000 – \$99,999

Lisa Tedeschini &
Bruce Rigal

Kathy & Richard S.
Fuld, Jr.

Julie & Joel
Greenblatt

Sloan & David
Greenspan

Jane & Eric Herzog
Judy Heyboer

Barbara & Amos
Hostetter

Karen & Paul Isaac
Jeanne & Frank

Jemison
Lamont Jones &
Stacy Sharpe

Rachel Kohler & Mark
S. Hoplamazian

Shelley S. & Donald
M. Levy

Mr. & Mrs. Joshua
Lipman

Jill & Paul Meister
Allison & Roberto

Mignone
The Palermo-Ravich

Foundation
Michelle Pinggera

Michael & Gigi Pucker
Amy & James Ramsey

Diana & Bruce Rauner
Heidi G.C. & Richard

O. Rieger
Joanna Riley

Cari & Michael J.
Sacks

Luly & Maurice
Samuels

Nan Schaffer

Carole & Gordon
Segal

Wendy Shattuck &
Samuel Plimpton

John A. Sprague
Susan W. Tofias

Bryan Traubert &
Penny Pritzker

Michelle Pinggera
Michael & Gigi Pucker

Amy & James Ramsey
Diana & Bruce Rauner

Heidi G.C. & Richard
O. Rieger

Joanna Riley
Cari & Michael J.

Sacks
Luly & Maurice

Samuels
Nan Schaffer

Carole & Gordon
Segal

Wendy Shattuck &
Samuel Plimpton

John A. Sprague
Susan W. Tofias

Bryan Traubert &
Penny Pritzker

Michelle Pinggera
Michael & Gigi Pucker

Amy & James Ramsey
Diana & Bruce Rauner

Heidi G.C. & Richard
O. Rieger

Joanna Riley
Cari & Michael J.

Sacks
Luly & Maurice

Samuels
Nan Schaffer

Carole & Gordon
Segal

Wendy Shattuck &
Samuel Plimpton

John A. Sprague
Susan W. Tofias

Bryan Traubert &
Penny Pritzker

Michelle Pinggera
Michael & Gigi Pucker

Amy & James Ramsey
Diana & Bruce Rauner

Heidi G.C. & Richard
O. Rieger

Joanna Riley
Cari & Michael J.

Sacks
Luly & Maurice

Samuels
Nan Schaffer

Carole & Gordon
Segal

Wendy Shattuck &
Samuel Plimpton

John A. Sprague
Susan W. Tofias

Bryan Traubert &
Penny Pritzker

Michelle Pinggera
Michael & Gigi Pucker

Amy & James Ramsey
Diana & Bruce Rauner

Heidi G.C. & Richard
O. Rieger

Joanna Riley
Cari & Michael J.

Sacks
Luly & Maurice

Samuels
Nan Schaffer

Carole & Gordon
Segal

Wendy Shattuck &
Samuel Plimpton

John A. Sprague
Susan W. Tofias

Bryan Traubert &
Penny Pritzker

Michelle Pinggera
Michael & Gigi Pucker

Amy & James Ramsey
Diana & Bruce Rauner

Heidi G.C. & Richard
O. Rieger

Joanna Riley
Cari & Michael J.

Sacks
Luly & Maurice

Samuels
Nan Schaffer

Carole & Gordon
Segal

Wendy Shattuck &
Samuel Plimpton

John A. Sprague
Susan W. Tofias

Bryan Traubert &
Penny Pritzker

Michelle Pinggera
Michael & Gigi Pucker

Amy & James Ramsey
Diana & Bruce Rauner

Heidi G.C. & Richard
O. Rieger

Joanna Riley
Cari & Michael J.

Sacks
Luly & Maurice

Samuels
Nan Schaffer

Carole & Gordon
Segal

Wendy Shattuck &
Samuel Plimpton

John A. Sprague
Susan W. Tofias

Bryan Traubert &
Penny Pritzker

Michelle Pinggera
Michael & Gigi Pucker

Amy & James Ramsey
Diana & Bruce Rauner

Heidi G.C. & Richard
O. Rieger

Joanna Riley
Cari & Michael J.

Sacks
Luly & Maurice

Samuels
Nan Schaffer

Carole & Gordon
Segal

Wendy Shattuck &
Samuel Plimpton

John A. Sprague
Susan W. Tofias

Bryan Traubert &
Penny Pritzker

Michelle Pinggera
Michael & Gigi Pucker

Amy & James Ramsey
Diana & Bruce Rauner

Heidi G.C. & Richard
O. Rieger

Joanna Riley
Cari & Michael J.

Sacks
Luly & Maurice

Samuels
Nan Schaffer

Carole & Gordon
Segal

Wendy Shattuck &
Samuel Plimpton

John A. Sprague
Susan W. Tofias

Bryan Traubert &
Penny Pritzker

Michelle Pinggera
Michael & Gigi Pucker

Amy & James Ramsey
Diana & Bruce Rauner

Heidi G.C. & Richard
O. Rieger

Joanna Riley
Cari & Michael J.

Sacks
Luly & Maurice

Samuels
Nan Schaffer

Carole & Gordon
Segal

Wendy Shattuck &
Samuel Plimpton

John A. Sprague
Susan W. Tofias

Bryan Traubert &
Penny Pritzker

Michelle Pinggera
Michael & Gigi Pucker

Amy & James Ramsey
Diana & Bruce Rauner

Heidi G.C. & Richard
O. Rieger

Joanna Riley
Cari & Michael J.

Sacks
Luly & Maurice

Samuels
Nan Schaffer

Carole & Gordon
Segal

Wendy Shattuck &
Samuel Plimpton

John A. Sprague
Susan W. Tofias

Bryan Traubert &
Penny Pritzker

Michelle Pinggera
Michael & Gigi Pucker

Amy & James Ramsey
Diana & Bruce Rauner

Heidi G.C. & Richard
O. Rieger

Joanna Riley
Cari & Michael J.

Sacks
Luly & Maurice

Samuels
Nan Schaffer

Carole & Gordon
Segal

Wendy Shattuck &
Samuel Plimpton

John A. Sprague
Susan W. Tofias

Bryan Traubert &
Penny Pritzker

Michelle Pinggera
Michael & Gigi Pucker

Amy & James Ramsey
Diana & Bruce Rauner

Heidi G.C. & Richard
O. Rieger

Joanna Riley
Cari & Michael J.

Sacks
Luly & Maurice

Samuels
Nan Schaffer

Carole & Gordon
Segal

Wendy Shattuck &
Samuel Plimpton

John A. Sprague
Susan W. Tofias

Bryan Traubert &
Penny Pritzker

Michelle Pinggera
Michael & Gigi Pucker

Amy & James Ramsey
Diana & Bruce Rauner

Heidi G.C. & Richard
O. Rieger

Joanna Riley
Cari & Michael J.

Sacks
Luly & Maurice

Samuels
Nan Schaffer

Carole & Gordon
Segal

Wendy Shattuck &
Samuel Plimpton

John A. Sprague
Susan W. Tofias

Bryan Traubert &
Penny Pritzker

Michelle Pinggera
Michael & Gigi Pucker

Amy & James Ramsey
Diana & Bruce Rauner

Heidi G.C. & Richard
O. Rieger

Joanna Riley
Cari & Michael J.

Sacks
Luly & Maurice

Samuels
Nan Schaffer

Carole & Gordon
Segal

Wendy Shattuck &
Samuel Plimpton

John A. Sprague
Susan W. Tofias

Bryan Traubert &
Penny Pritzker

Michelle Pinggera
Michael & Gigi Pucker

Amy & James Ramsey
Diana & Bruce Rauner

Heidi G.C. & Richard
O. Rieger

Joanna Riley
Cari & Michael J.

Sacks
Luly & Maurice

Samuels
Nan Schaffer

Carole & Gordon
Segal

Wendy Shattuck &
Samuel Plimpton

John A. Sprague
Susan W. Tofias

Bryan Traubert &
Penny Pritzker

Michelle Pinggera
Michael & Gigi Pucker

Amy & James Ramsey
Diana & Bruce Rauner

Heidi G.C. & Richard
O. Rieger

Joanna Riley
Cari & Michael J.

Sacks
Luly & Maurice

Samuels
Nan Schaffer

Carole & Gordon
Segal

Wendy Shattuck &
Samuel Plimpton

John A. Sprague
Susan W. Tofias

Bryan Traubert &
Penny Pritzker

Michelle Pinggera
Michael & Gigi Pucker

Amy & James Ramsey
Diana & Bruce Rauner

Heidi G.C. & Richard
O. Rieger

Joanna Riley
Cari & Michael J.

Sacks
Luly & Maurice

Samuels
Nan Schaffer

Carole & Gordon
Segal

Wendy Shattuck &
Samuel Plimpton

John A. Sprague
Susan W. Tofias

Bryan Traubert &
Penny Pritzker

Michelle Pinggera
Michael & Gigi Pucker

Amy & James Ramsey
Diana & Bruce Rauner

Heidi G.C. & Richard
O. Rieger

Joanna Riley
Cari & Michael J.

Sacks
Luly & Maurice

Samuels
Nan Schaffer

Carole & Gordon
Segal

Wendy Shattuck &
Samuel Plimpton

John A. Sprague
Susan W. Tofias

Bryan Traubert &
Penny Pritzker

Michelle Pinggera
Michael & Gigi Pucker

Amy & James Ramsey
Diana & Bruce Rauner

Heidi G.C. & Richard
O. Rieger

Joanna Riley
Cari & Michael J.

Sacks
Luly & Maurice

Samuels
Nan Schaffer

Carole & Gordon
Segal

Wendy Shattuck &
Samuel Plimpton

John A. Sprague
Susan W. Tofias

Bryan Traubert &
Penny Pritzker

Michelle Pinggera
Michael & Gigi Pucker

Amy & James Ramsey
Diana & Bruce Rauner

Heidi G.C. & Richard
O. Rieger

Joanna Riley
Cari & Michael J.

Richard & Pascale Berner	Nina & Ron Gilson Susan & Jeff Goldenberg	John F. Levy & Gail Rothenberg	Kaushik Ray RCG Fund	Poppy White & Steven R. Berger	Mary Carter & Stephen Kempf	Kaye Foster Karen & James Frank	Florence Koplow Bud & Wendie Kroll	Laurie Brown Nagin & Ken Nagin	The Schechter Foundation
Terrie & Brad Bloom	Judy & Larry Bohn	Peggy & Larry Levy	Sonja L. Reed & Daniel N. Epstein	Sheryl & Larry Wyman	Helen Charlupski & Joseph Biederman	Diane & Bob Frankle Rebecca & John Garabedian	Karen & Mel Kronick Carolyn Lattin & Venkat Venkatraman	Sarah & Mark Najarian	Gail & David Schechter
Randi & John Brooklier	Andrea & Jim Gordon, The Edgewater Funds	Susan Disney Lord & Scott Lord	Dalia & Ramzi Rishani The Samberg Family	and Sue E. Berman Charitable Foundation	Julie A. Christopher Brian & Beth Clymer	Nancy & Nat Gardiner Rebecca Garland	Maribelle & Steve Leavitt	Marty & Bonnie Oberman	Melanie & Doug Schrank
Marc Brown & Joanne Nemerovski	Sandra Gordon	Richard K. Lubin Family Foundation	Neil & Wendy Sandler Nancy & Peter Saperstone	Barbara Zuckerberg Sheri & Sherwin Zuckerman	Bruce & Mary Louise Cohen	Coleen & Brian Gelber Jackie & Alan L. Goldberg	Marcia & Alan Leifer Sherry & Alan Leventhal	Mia Park & Paul A. Levy	Beverly W. & Ira J. Schulman
Lynda & Jeffrey J. Busgang	Toni & Doug Gordon Trudy & Bob Gottesman	Kate Lubin and Glen Sutton	The Schadt Foundation		The Cohen Family Foundation	Diana & Harrison Goldin	Karen Secunda Levy Ellen M. & Richard J. Lieb	Garret & Alanna Peters and Devin Engel	Claudia & Steven Schwartz, Midtown Athletic Clubs
Susan Cable & Benjamin Gomez	Sarah & Josh Greenhill	Emily and Greg Woods	Ellen Schapps & Richard Richman	\$5,000 – \$9,999 Anonymous (2)	Hannah and Samuel Cohn Memorial Foundation	Sara & Harry Gorman Mindy & Jonathan Gray	Ellen M. & Richard J. Lieb Jennifer & Marc Lipschultz	Bob Pritchard & Margaret Wells	Wendy & Jeffrey Schwarz / Schwarz Family Foundation
Cecilia Chan	Judy & Bill Greffin Sheila & Joseph Gutman Family	Nancy and Richard Lubin	Shonni J. Silverberg & John M. Shapiro	Ida & Myles Abbott Gail & Eric Adelstein	Caretha & Ken Coleman	Mindy & Jonathan Gray	Jennifer & Marc Lipschultz	Donald & Frances Putnoi	Tony Schwensen & Laura Fischman
Margot T. & Jonathan Davis	Robert Davis	The Malkin Family	Susan & John Simon	The Alpert Family Foundation	Dr. Asha S. Collins & Mr. Andrew Sather	Lindy Green Adi & Jerry Greenberg	Christopher & Angela Lovest	Susan & Robert Quinn Rita & Jeff Rayman	Lara Seligman & Rafi Musher
Mary & John Dicken, Jr.	The Hammer Family Edward Herrick	B. Lee & Susan Mallory	Louis Singer & Adele Centanni	Ellen & Michael Alter Colette Bablon Ament & Jerry Ament	Eileen & Jack Connors Todd Cronan	Beth & Lawrence Greenberg	Anne R. Lovett & Stephen G. Woodsum	Barbara Reiss-Snyder & Jim Snyder	Sonni & Steve Senkfor Sabah Servaes
Abigail Disney & Pierre Hauser	David Herro & Jay Franke	Carl J. Martignetti Robert May	Christine & Rob Small Gwenn & Mark A. Snider	Belinda & Ivaldo Basso	Steven D'Angelo Leslie & John Daniel DEF Fund	Wycliffe Grousbeck Jeffrey & Linda Hammes	Hal Luft The Milton and Tamar Maltz Family Foundation	Joyce Reynolds Sinclair, Ph.D. & Gerald Sinclair, M.D.	Barbara & Edward Shapiro Connie & James Shapiro
Sheri & Roy Disney Tim & Neda Disney	Heather Hillman & John Whalen	Barbara G. & Richard I. Melvoin	Susan G. & James M. Snider	Joan W. & Steven B. Belkin	William DeWoskin Julie & Ronald Druker	Jeffrey & Linda Hammes	The Milton and Tamar Maltz Family Foundation	David & Marian Rocker	Norma L. & Benson P. Shapiro
Dennis Driver <i>Susan & James Edelman</i>	Heather & Ron Hoffman	Susan & Andrew Metrick	Katrin & Tony Sosnick Sharman Spector- Angel & Gary Angel	Joan W. & Steven B. Belkin	Steven D'Angelo Leslie & John Daniel DEF Fund	Wycliffe Grousbeck Jeffrey & Linda Hammes	The Milton and Tamar Maltz Family Foundation	David & Marian Rocker	Norma L. & Benson P. Shapiro
Jill & Ken Iscol	Beth & Jack Meyer	Laura Aryeh Murawczyk & Richard Murawczyk	Sharon Sullivan & Jeffrey Kindler	Vivian & Daniel Bernstein	William DeWoskin Julie & Ronald Druker	Jeffrey & Linda Hammes	The Milton and Tamar Maltz Family Foundation	David & Marian Rocker	Norma L. & Benson P. Shapiro
Joanne & Paul Egerman	Jane Kahn & Michael Bien	Laura Aryeh Murawczyk & Richard Murawczyk	Sharon Sullivan & Jeffrey Kindler	Vivian & Daniel Bernstein	Tara & Jeff Engelberg Paul English	Susan M. & Scott D. Hawkins	Steve & Sue Mandel David Manfredi & Elizabeth Lowrey	David & Marian Rocker	Norma L. & Benson P. Shapiro
George Elbaum & Mimi Jensen	Rikki & Barry Kaplan Susan & Jay Kaufman	Beth & Jack Meyer Laura Aryeh Murawczyk & Richard Murawczyk	Sharon Sullivan & Jeffrey Kindler	Vivian & Daniel Bernstein	Esta Gordon Epstein & Robert Epstein	Susan M. & Scott D. Hawkins	Steve & Sue Mandel David Manfredi & Elizabeth Lowrey	David & Marian Rocker	Norma L. & Benson P. Shapiro
Robyn & Rick Fearon	Kim & Brad Keywell	Laura Aryeh Murawczyk & Richard Murawczyk	Sharon Sullivan & Jeffrey Kindler	Vivian & Daniel Bernstein	Lana Epstein Judith & Ralph Evans	Susan M. & Scott D. Hawkins	Steve & Sue Mandel David Manfredi & Elizabeth Lowrey	David & Marian Rocker	Norma L. & Benson P. Shapiro
David H. Feinberg & Marina Kalb	Anna & Peter Kolchinsky	Laura Aryeh Murawczyk & Richard Murawczyk	Sharon Sullivan & Jeffrey Kindler	Vivian & Daniel Bernstein	Carol & Steven Felsenthal	Susan M. & Scott D. Hawkins	Steve & Sue Mandel David Manfredi & Elizabeth Lowrey	David & Marian Rocker	Norma L. & Benson P. Shapiro
Joan & William D. Feldman	Wendy & Daniel Kraft Susanna Lachs & Dean Adler	Laura Aryeh Murawczyk & Richard Murawczyk	Sharon Sullivan & Jeffrey Kindler	Vivian & Daniel Bernstein	Robert Felsenthal & Roxanne Hori	Susan M. & Scott D. Hawkins	Steve & Sue Mandel David Manfredi & Elizabeth Lowrey	David & Marian Rocker	Norma L. & Benson P. Shapiro
Marian Freedman*	Wendy & Daniel Kraft Susanna Lachs & Dean Adler	Laura Aryeh Murawczyk & Richard Murawczyk	Sharon Sullivan & Jeffrey Kindler	Vivian & Daniel Bernstein	Reva & Eric Fischman Tina & Bob Fockler	Susan M. & Scott D. Hawkins	Steve & Sue Mandel David Manfredi & Elizabeth Lowrey	David & Marian Rocker	Norma L. & Benson P. Shapiro
Annelis Frenkel	Wendy & Daniel Kraft Susanna Lachs & Dean Adler	Laura Aryeh Murawczyk & Richard Murawczyk	Sharon Sullivan & Jeffrey Kindler	Vivian & Daniel Bernstein	Martha & Robert F. Fogelman and Bradley & Robert F. Fogelman II	Susan M. & Scott D. Hawkins	Steve & Sue Mandel David Manfredi & Elizabeth Lowrey	David & Marian Rocker	Norma L. & Benson P. Shapiro
Ross Garon & H. Anna Suh	Wendy & Daniel Kraft Susanna Lachs & Dean Adler	Laura Aryeh Murawczyk & Richard Murawczyk	Sharon Sullivan & Jeffrey Kindler	Vivian & Daniel Bernstein	Reva & Eric Fischman Tina & Bob Fockler	Susan M. & Scott D. Hawkins	Steve & Sue Mandel David Manfredi & Elizabeth Lowrey	David & Marian Rocker	Norma L. & Benson P. Shapiro
Rich Gerszberg & Caren Osten Gerszberg	Wendy & Daniel Kraft Susanna Lachs & Dean Adler	Laura Aryeh Murawczyk & Richard Murawczyk	Sharon Sullivan & Jeffrey Kindler	Vivian & Daniel Bernstein	Reva & Eric Fischman Tina & Bob Fockler	Susan M. & Scott D. Hawkins	Steve & Sue Mandel David Manfredi & Elizabeth Lowrey	David & Marian Rocker	Norma L. & Benson P. Shapiro
	Wendy & Daniel Kraft Susanna Lachs & Dean Adler	Laura Aryeh Murawczyk & Richard Murawczyk	Sharon Sullivan & Jeffrey Kindler	Vivian & Daniel Bernstein	Reva & Eric Fischman Tina & Bob Fockler	Susan M. & Scott D. Hawkins	Steve & Sue Mandel David Manfredi & Elizabeth Lowrey	David & Marian Rocker	Norma L. & Benson P. Shapiro
	Wendy & Daniel Kraft Susanna Lachs & Dean Adler	Laura Aryeh Murawczyk & Richard Murawczyk	Sharon Sullivan & Jeffrey Kindler	Vivian & Daniel Bernstein	Reva & Eric Fischman Tina & Bob Fockler	Susan M. & Scott D. Hawkins	Steve & Sue Mandel David Manfredi & Elizabeth Lowrey	David & Marian Rocker	Norma L. & Benson P. Shapiro
	Wendy & Daniel Kraft Susanna Lachs & Dean Adler	Laura Aryeh Murawczyk & Richard Murawczyk	Sharon Sullivan & Jeffrey Kindler	Vivian & Daniel Bernstein	Reva & Eric Fischman Tina & Bob Fockler	Susan M. & Scott D. Hawkins	Steve & Sue Mandel David Manfredi & Elizabeth Lowrey	David & Marian Rocker	Norma L. & Benson P. Shapiro
	Wendy & Daniel Kraft Susanna Lachs & Dean Adler	Laura Aryeh Murawczyk & Richard Murawczyk	Sharon Sullivan & Jeffrey Kindler	Vivian & Daniel Bernstein	Reva & Eric Fischman Tina & Bob Fockler	Susan M. & Scott D. Hawkins	Steve & Sue Mandel David Manfredi & Elizabeth Lowrey	David & Marian Rocker	Norma L. & Benson P. Shapiro
	Wendy & Daniel Kraft Susanna Lachs & Dean Adler	Laura Aryeh Murawczyk & Richard Murawczyk	Sharon Sullivan & Jeffrey Kindler	Vivian & Daniel Bernstein	Reva & Eric Fischman Tina & Bob Fockler	Susan M. & Scott D. Hawkins	Steve & Sue Mandel David Manfredi & Elizabeth Lowrey	David & Marian Rocker	Norma L. & Benson P. Shapiro
	Wendy & Daniel Kraft Susanna Lachs & Dean Adler	Laura Aryeh Murawczyk & Richard Murawczyk	Sharon Sullivan & Jeffrey Kindler	Vivian & Daniel Bernstein	Reva & Eric Fischman Tina & Bob Fockler	Susan M. & Scott D. Hawkins	Steve & Sue Mandel David Manfredi & Elizabeth Lowrey	David & Marian Rocker	Norma L. & Benson P. Shapiro
	Wendy & Daniel Kraft Susanna Lachs & Dean Adler	Laura Aryeh Murawczyk & Richard Murawczyk	Sharon Sullivan & Jeffrey Kindler	Vivian & Daniel Bernstein	Reva & Eric Fischman Tina & Bob Fockler	Susan M. & Scott D. Hawkins	Steve & Sue Mandel David Manfredi & Elizabeth Lowrey	David & Marian Rocker	Norma L. & Benson P. Shapiro
	Wendy & Daniel Kraft Susanna Lachs & Dean Adler	Laura Aryeh Murawczyk & Richard Murawczyk	Sharon Sullivan & Jeffrey Kindler	Vivian & Daniel Bernstein	Reva & Eric Fischman Tina & Bob Fockler	Susan M. & Scott D. Hawkins	Steve & Sue Mandel David Manfredi & Elizabeth Lowrey	David & Marian Rocker	Norma L. & Benson P. Shapiro
	Wendy & Daniel Kraft Susanna Lachs & Dean Adler	Laura Aryeh Murawczyk & Richard Murawczyk	Sharon Sullivan & Jeffrey Kindler	Vivian & Daniel Bernstein	Reva & Eric Fischman Tina & Bob Fockler	Susan M. & Scott D. Hawkins	Steve & Sue Mandel David Manfredi & Elizabeth Lowrey	David & Marian Rocker	Norma L. & Benson P. Shapiro
	Wendy & Daniel Kraft Susanna Lachs & Dean Adler	Laura Aryeh Murawczyk & Richard Murawczyk	Sharon Sullivan & Jeffrey Kindler	Vivian & Daniel Bernstein	Reva & Eric Fischman Tina & Bob Fockler	Susan M. & Scott D. Hawkins	Steve & Sue Mandel David Manfredi & Elizabeth Lowrey	David & Marian Rocker	Norma L. & Benson P. Shapiro
	Wendy & Daniel Kraft Susanna Lachs & Dean Adler	Laura Aryeh Murawczyk & Richard Murawczyk	Sharon Sullivan & Jeffrey Kindler	Vivian & Daniel Bernstein	Reva & Eric Fischman Tina & Bob Fockler	Susan M. & Scott D. Hawkins	Steve & Sue Mandel David Manfredi & Elizabeth Lowrey	David & Marian Rocker	Norma L. & Benson P. Shapiro
	Wendy & Daniel Kraft Susanna Lachs & Dean Adler	Laura Aryeh Murawczyk & Richard Murawczyk	Sharon Sullivan & Jeffrey Kindler	Vivian & Daniel Bernstein	Reva & Eric Fischman Tina & Bob Fockler	Susan M. & Scott D. Hawkins	Steve & Sue Mandel David Manfredi & Elizabeth Lowrey	David & Marian Rocker	Norma L. & Benson P. Shapiro
	Wendy & Daniel Kraft Susanna Lachs & Dean Adler	Laura Aryeh Murawczyk & Richard Murawczyk	Sharon Sullivan & Jeffrey Kindler	Vivian & Daniel Bernstein	Reva & Eric Fischman Tina & Bob Fockler	Susan M. & Scott D. Hawkins	Steve & Sue Mandel David Manfredi & Elizabeth Lowrey	David & Marian Rocker	Norma L. & Benson P. Shapiro
	Wendy & Daniel Kraft Susanna Lachs & Dean Adler	Laura Aryeh Murawczyk & Richard Murawczyk	Sharon Sullivan & Jeffrey Kindler	Vivian & Daniel Bernstein	Reva & Eric Fischman Tina & Bob Fockler	Susan M. & Scott D. Hawkins	Steve & Sue Mandel David Manfredi & Elizabeth Lowrey	David & Marian Rocker	Norma L. & Benson P. Shapiro
	Wendy & Daniel Kraft Susanna Lachs & Dean Adler	Laura Aryeh Murawczyk & Richard Murawczyk	Sharon Sullivan & Jeffrey Kindler	Vivian & Daniel Bernstein	Reva & Eric Fischman Tina & Bob Fockler	Susan M. & Scott D. Hawkins	Steve & Sue Mandel David Manfredi & Elizabeth Lowrey	David & Marian Rocker	Norma L. & Benson P. Shapiro
	Wendy & Daniel Kraft Susanna Lachs & Dean Adler	Laura Aryeh Murawczyk & Richard Murawczyk	Sharon Sullivan & Jeffrey Kindler	Vivian & Daniel Bernstein	Reva & Eric Fischman Tina & Bob Fockler	Susan M. & Scott D. Hawkins	Steve & Sue Mandel David Manfredi & Elizabeth Lowrey	David & Marian Rocker	Norma L. & Benson P. Shapiro
	Wendy & Daniel Kraft Susanna Lachs & Dean Adler	Laura Aryeh Murawczyk & Richard Murawczyk	Sharon Sullivan & Jeffrey Kindler	Vivian & Daniel Bernstein	Reva & Eric Fischman Tina & Bob Fockler	Susan M. & Scott D. Hawkins	Steve & Sue Mandel David Manfredi & Elizabeth Lowrey	David & Marian Rocker	Norma L. & Benson P. Shapiro
	Wendy & Daniel Kraft Susanna Lachs & Dean Adler	Laura Aryeh Murawczyk & Richard Murawczyk	Sharon Sullivan & Jeffrey Kindler	Vivian & Daniel Bernstein	Reva & Eric Fischman Tina & Bob Fockler	Susan M. & Scott D. Hawkins	Steve & Sue Mandel David Manfredi & Elizabeth Lowrey	David & Marian Rocker	Norma L. & Benson P. Shapiro
	Wendy & Daniel Kraft Susanna Lachs & Dean Adler	Laura Aryeh Murawczyk & Richard Murawczyk	Sharon Sullivan & Jeffrey Kindler	Vivian & Daniel Bernstein	Reva & Eric Fischman Tina & Bob Fockler	Susan M. & Scott D. Hawkins	Steve & Sue Mandel David Manfredi & Elizabeth Lowrey	David & Marian Rocker	Norma L. & Benson P. Shapiro
	Wendy & Daniel Kraft Susanna Lachs & Dean Adler	Laura Aryeh Murawczyk & Richard Murawczyk	Sharon Sullivan & Jeffrey Kindler	Vivian & Daniel Bernstein	Reva & Eric Fischman Tina & Bob Fockler	Susan M. & Scott D. Hawkins	Steve & Sue Mandel David Manfredi & Elizabeth Lowrey	David & Marian Rocker	Norma L. & Benson P. Shapiro
	Wendy & Daniel Kraft Susanna Lachs & Dean Adler	Laura Aryeh Murawczyk & Richard Murawczyk	Sharon Sullivan & Jeffrey Kindler	Vivian & Daniel Bernstein	Reva & Eric Fischman Tina & Bob Fockler	Susan M. & Scott D. Hawkins	Steve & Sue Mandel David Manfredi & Elizabeth Lowrey	David & Marian Rocker	Norma L. & Benson P. Shapiro
	Wendy & Daniel Kraft Susanna Lachs & Dean Adler	Laura Aryeh Murawczyk & Richard Murawczyk	Sharon Sullivan & Jeffrey Kindler	Vivian & Daniel Bernstein	Reva & Eric Fischman Tina & Bob Fockler	Susan M. & Scott D. Hawkins	Steve & Sue Mandel David Manfredi & Elizabeth Lowrey	David & Marian Rocker	Norma L. & Benson P. Shapiro
	Wendy & Daniel Kraft Susanna Lachs & Dean Adler	Laura Aryeh Murawczyk & Richard Murawczyk	Sharon Sullivan & Jeffrey Kindler	Vivian & Daniel Bernstein	Reva & Eric Fischman Tina & Bob Fockler	Susan M. & Scott D. Hawkins	Steve & Sue Mandel David Manfredi & Elizabeth Lowrey	David & Marian Rocker	Norma L. & Benson P. Shapiro
	Wendy & Daniel Kraft Susanna Lachs & Dean Adler	Laura Aryeh Murawczyk & Richard Murawczyk	Sharon Sullivan & Jeffrey Kindler	Vivian & Daniel Bernstein	Reva & Eric Fischman Tina & Bob Fockler	Susan M. & Scott D. Hawkins	Steve & Sue Mandel David Manfredi & Elizabeth Lowrey	David & Marian Rocker	Norma L. & Benson P. Shapiro
	Wendy & Daniel Kraft Susanna Lachs & Dean Adler	Laura Aryeh Murawczyk & Richard Murawczyk	Sharon Sullivan & Jeffrey Kindler	Vivian & Daniel Bernstein	Reva & Eric Fischman Tina & Bob Fockler	Susan M. & Scott D. Hawkins	Steve & Sue Mandel David Manfredi & Elizabeth Lowrey	David & Marian Rocker	Norma L. & Benson P. Shapiro
	Wendy & Daniel Kraft Susanna Lachs & Dean Adler	Laura Aryeh Murawczyk & Richard Murawczyk	Sharon Sullivan & Jeffrey Kindler	Vivian & Daniel Bernstein	Reva & Eric Fischman Tina & Bob Fockler	Susan M. & Scott D. Hawkins	Steve & Sue Mandel David Manfredi & Elizabeth Lowrey	David & Marian Rocker	Norma L. & Benson P. Shapiro
	Wendy & Daniel Kraft Susanna Lachs & Dean Adler	Laura Aryeh Murawczyk & Richard Murawczyk	Sharon Sullivan & Jeffrey Kindler	Vivian & Daniel Bernstein	Reva & Eric Fischman Tina & Bob Fockler	Susan M. & Scott D. Hawkins	Steve & Sue Mandel David Manfredi & Elizabeth Lowrey	David & Marian Rocker	Norma L. & Benson P. Shapiro
	Wendy & Daniel Kraft Susanna Lachs & Dean Adler	Laura Aryeh Murawczyk & Richard Murawczyk	Sharon Sullivan & Jeffrey Kindler	Vivian & Daniel Bernstein	Reva & Eric Fischman Tina & Bob Fockler	Susan M. & Scott D. Hawkins	Steve & Sue Mandel David Manfredi & Elizabeth Lowrey	David & Marian Rocker	Norma L. & Benson P. Shapiro
	Wendy & Daniel Kraft Susanna Lachs & Dean Adler	Laura Aryeh Murawczyk & Richard Murawczyk	Sharon Sullivan & Jeffrey Kindler	Vivian & Daniel Bernstein	Reva & Eric Fischman Tina & Bob Fockler	Susan M. & Scott D. Hawkins	Steve & Sue Mandel David Manfredi & Elizabeth Lowrey	David & Marian Rocker	Norma L. & Benson P. Shapiro
	Wendy & Daniel Kraft Susanna Lachs & Dean Adler	Laura Aryeh Murawczyk & Richard Murawczyk	Sharon Sullivan & Jeffrey Kindler	Vivian & Daniel Bernstein	Reva & Eric Fischman Tina & Bob Fockler	Susan M. & Scott D. Hawkins	Steve & Sue Mandel David Manfredi & Elizabeth Lowrey	David & Marian Rocker	Norma L. & Benson P. Shapiro
	Wendy & Daniel Kraft Susanna Lachs & Dean Adler	Laura Aryeh Murawczyk & Richard Murawczyk	Sharon Sullivan & Jeffrey Kindler	Vivian & Daniel Bernstein	Reva & Eric Fischman Tina & Bob Fockler	Susan M. & Scott D. Hawkins	Steve & Sue Mandel David Manfredi & Elizabeth Lowrey	David & Marian Rocker	Norma L. & Benson P. Shapiro
	Wendy & Daniel Kraft Susanna Lachs & Dean Adler	Laura Aryeh Murawczyk & Richard Murawczyk	Sharon Sullivan & Jeffrey Kindler	Vivian & Daniel Bernstein	Reva & Eric Fischman Tina & Bob Fockler	Susan M. & Scott D. Hawkins	Steve & Sue Mandel David Manfredi & Elizabeth Lowrey	David & Marian Rocker	Norma L. & Benson P. Shapiro
	Wendy & Daniel Kraft Susanna Lachs & Dean Adler	Laura Aryeh Murawczyk & Richard Murawczyk	Sharon Sullivan & Jeffrey Kindler	Vivian & Daniel Bernstein	Reva & Eric Fischman Tina & Bob Fockler	Susan M. & Scott D. Hawkins	Steve & Sue Mandel David Manfredi & Elizabeth Lowrey	David & Marian Rocker	Norma L. & Benson P. Shapiro
	Wendy & Daniel Kraft Susanna Lachs & Dean Adler	Laura Aryeh Murawczyk & Richard Murawczyk	Sharon Sullivan & Jeffrey Kindler	Vivian & Daniel Bernstein	Reva & Eric Fischman Tina & Bob Fockler	Susan M. & Scott D. Hawkins	Steve & Sue Mandel David Manfredi & Elizabeth Lowrey	David & Marian Rocker	Norma L. & Benson P. Shapiro
	Wendy & Daniel Kraft Susanna Lachs & Dean Adler	Laura Aryeh Murawczyk & Richard Murawczyk	Sharon Sullivan & Jeffrey Kindler	Vivian & Daniel Bernstein	Reva & Eric Fischman Tina & Bob Fockler	Susan M. & Scott D. Hawkins	Steve & Sue Mandel David Manfredi & Elizabeth Lowrey	David & Marian Rocker	Norma L. & Benson P. Shapiro
	Wendy & Daniel Kraft Susanna Lachs & Dean Adler	Laura Aryeh Murawczyk & Richard Murawczyk	Sharon Sullivan & Jeffrey Kindler	Vivian & Daniel Bernstein	Reva & Eric Fischman Tina & Bob Fockler	Susan M. & Scott D. Hawkins	Steve & Sue Mandel David Manfredi & Elizabeth Lowrey	David & Marian Rocker	Norma L. & Benson P. Shapiro
	Wendy & Daniel Kraft Susanna Lachs & Dean Adler	Laura Aryeh Murawczyk & Richard Murawczyk	Sharon Sullivan & Jeffrey Kindler	Vivian & Daniel Bernstein	Reva & Eric Fischman Tina & Bob Fockler	Susan M. & Scott D. Hawkins	Steve & Sue Mandel David Manfredi & Elizabeth Lowrey	David & Marian Rocker	Norma L. & Benson P. Shapiro
	Wendy & Daniel Kraft Susanna Lachs & Dean Adler	Laura Aryeh Murawczyk & Richard Murawczyk	Sharon Sullivan & Jeffrey Kindler	Vivian & Daniel Bernstein	Reva & Eric Fischman Tina & Bob Fockler	Susan M. & Scott D. Hawkins	Steve & Sue Mandel David Manfredi & Elizabeth Lowrey	David & Marian Rocker	Norma L. & Benson P. Shapiro
	Wendy & Daniel Kraft Susanna Lachs & Dean Adler	Laura Aryeh Murawczyk & Richard Murawczyk	Sharon Sullivan & Jeffrey Kindler	Vivian & Daniel Bernstein	Reva & Eric Fischman Tina & Bob Fockler	Susan M. & Scott D. Hawkins	Steve & Sue Mandel David Manfredi & Elizabeth Lowrey	David & Marian Rocker	Norma L. & Benson P. Shapiro
	Wendy & Daniel Kraft Susanna Lachs & Dean Adler	Laura Aryeh Murawczyk & Richard Murawczyk	Sharon Sullivan & Jeffrey Kindler	Vivian					

Rob & Eileen Stein Jeanette Sublett & Langdon Neal Ed Swiss Gustav Szabo & Marjorie Kaplan Nicki & Harold Tanner Ben & Kate Taylor Jennifer Weber & Laurence Bailen Lydia & George Weiss Hon. Rebecca Westerfield (Ret.) & Ivy Fine Elizabeth F. & Tom D. Wippman Amy & Richard Wise Lisa & Richard Witten Eve Youngerman & W. David Lee Vince Zampella	Joanne G. & Scott Blum Amy Boesky & Jacques Perold Sue & Barry Brucker Linda Campbell Amy & Eric Carlson Ami Cipolla & Steven Samuels Mikki & Darrell Cobbins Stacie & Aaron Cohen Myra & Reggie Crenshaw Michael & Susan Cristal Igor DaCosta & James Rondeau Pam Daley & Randy Phelps Michael Dimitrief The Draydor Foundation The Elkes Foundation Barbara & Mark Elsberg Camilla & Stefan Ericsson Jill Eskenazi & Eswar Priyadarshan Joshua Fine Hope Flack Howard Freedman & Rita Montlack Janie & Donny Friend Lenny Gail & Robin Steans Brad Gans Laure & Hal Garnick Sylvia & Ron Gerst Kathy & J.W. Gibson	Stephen & Laurie Girsky Joyce Glickman Estate of Bernice Godine Dana Golding & Richard Scharf Lynda M. Goldstein Ron Gonen Marina Gorbis & Chris Fleischut Ellen Feldberg Gordon & Michael Gordon Don Goss & Sadie Burton-Goss Susan & Blair Graber David Greenwalt Sally L. & Robert D. Gries Barbara & Steven Grossman Shirley D. Grossman Mimi Grossman Beth & Kurt Hansson Erin Harris Brad Henderson David & Michele Hirsch Deborah & Benjamin Hochberg Mina Hsu Carla D. Hunter & Andre-Michel Schub Joseph Jackson & Helena Kubicka Jane Joseph & Robert Elson Lisa & Michael Josephson Susan Och Kalver & Brian Kalver	Nancy R. Karp Sharon & Charles Karp Elaine & Robert Kaufman Paul Kazarian Elizabeth Keating Robyn & Shawn Kessler Susan Kirshner Sandy Korzeny & John Livingston Josh and Carolyn Kraft Family Philip Kurjan Susan & Harvey Lazarus Linda & Glen Levie Monte & Madeleine Levy Pamela Lipkin & Bruce Ratner Karina Litvack & Cliff Siegel Alla & Nathan Lubin Michelle & Jonathon Luft Cathy & Curtis Maas Rochelle & Richard Maize Joyce Margulies & Uttam Shah Sylvia G. Marks Mark Mathiasen Michael Mazer Linda L. McDonald, Ph.D. Russ & Randi Miron Carolyn Mugar Yvette & Peter Mulderry	Jessica & Andrew Nigrelli Michael Och Barbara & Vania O'Connor Kacey & Alec Ofsevit Laura & Matt Olton Erin Ostrow Allison & Tommy Parker Peggy & Barry Patrick Jing & Joel Piser Ryan & Jenny Prince Lisa & Jonathan Pruzan Suzanne & Bernard Pucker Susan & James Ratner Paula & Ira Resnick Elizabeth & Stephen Rosen Marc Rosenberg David W. Ruttenberg Ma'ayan & Richard E. Sands Marci & Michael K. Sapers Linda & Glenn Sessoms Ginger & William Sherak Fred Shore Neil Shore Judith C. & Jeffrey N. Siegel Linda Ellen & Ron Sklar Tara Slone-Goldstein & Wayne Goldstein Robin & David Small	Paula & Stephen Smith Andy & Jody Snider Binh-Minh Sobol Marcie & Avy Stein Jill & Kenneth Steinberg Julene & John Stellato Kim & Andrew Stephens Linda & Gerald Stern Paula Stern & Paul A. London Gerri & Kenneth A. Sweder Rikki Tahta & Orla Coleman Cynthia Tancer & Louis Giesler Chris Teano & David Kaskel Beth Terrana Joan & Michael Terry Andie & Michael Uiberall David Waldman K. C. & Jeff Warren Wendy Weiss & Stephen Shay Christoph Westphal Sarah & Oliver Wiener Jayne & Carl Williams Drs. Carol & Terry Winograd Deanna & Sidney Wolk Gayla & Walter Wood Steve Zuwala	\$1,000–\$2,499 Anonymous (7) Nina Abnee Ina & Stephen M. Abrams Alison Adams & Peter Coltery Megan Weeks Adams Pat & Ron Adler Jonathan Aibel Mary A. Akerson & Steven A. Cohen Nathan Alexander Carol & Howard Anderson Family Fund Susan Leopold Ansin Norman Appel & Susan Friedman Wilma & Kenneth Aschendorf Gilbert & Judith Asher John Atkinson Evelyn & David Auerbach Charmaine & Sean Bailey Bonnie & Michael Balkin Arna & Larry Banack Irina & Mark Barrocas Daniel Bartlett & John Myer Suzanne & Scott L. Baum Enid Beal Shari & Joel Beckman Marilyn & Jack A. Belz Tamar Ben-Dov Bette & Barry Bergsman	Armyan Bernstein & Christine Meleo- Bernstein Michelle Bernstein Zoe & G. Jonathan Bernstein Doreen & Charles* Bilezikian Linda Blackstone & Paul Castleman Anita Bloch Veronica Bloom Amy & Benjamin Bloomstone Donya & Scott Bommer Rob & Leslie Mitchel Bond Joan & Nick Boodrookas Bonnie Boswell & Rod Hamilton Susan Bradshaw & Bill Haerle Jonathan L. Brandt Alisoun & Stephen Brewster Rita & Charles Bronfman Barbara & Jim R. Bronner Roger Brooks & Bridget McShane Frank & Deenie Brosens Chad Brown Eileen A. & Harold A. Brown Ken Cooper Theresa & Philip Cothern Sharon & Paul Crane	Lillian & George Brown Rona & Ralph Brown Pam & James Buchholz Nancy Buck & James Sebenius Gretchen & Stephen Burke Claudia & Chet Burros Michael Bussey & Deborah Plummer Annette Butler Ruth Byrne & Luke Muchamore Gregory Cameron & Gregory Thompson Mamie & Greg Case Lisa & Dick Cashin Michaela Cassidy & Terry Whitney Barbara Bertozzi Castelli Maria & Jose Castrejon Mary Allison & Andy Cates Doris Christopher Fran Codispoti & Ken Schroeder Ellen R. Cohen & Daniel Haber Joyce & Barry Cohen Susan Bredhoff Cohen & Gerald D. Cohen Annabel Conrad & Iddo Patt Ken Cooper Theresa & Philip Cothern Sharon & Paul Crane	Leanne & Jeffrey Cribbs Marylouise Crofton- Atkins Jeffrey Cummings Sharon & Gary Curhan Darby Curtis & Mark Ginsberg Karen Dahl & Brian Reich Gila & Paul B. Daitz Lee A. Daniels Greg & Susan Danilow Kelly & Eric Davidson Embeth Davidtz & Jason Sloane Kenneth Davis Muller Davis & Lynn Straus Camille De Frank & Edward B. Chez Karen & Robert Deresiewicz Alexandra DeWitt & Josh Kindler Michael Diamond Toni & Michael Dieber Suzanne & Jacob Doft John & Nancy Donovan Leslie & Mitchell Dorf David Egeland & Andrew Friedman Jennifer & Richard Eidinger Nadine Ellerthorpe Judy & Anthony Evnin Trudy & Lester Fagen Fleur Fairman & Timothy N. Wallach Marsha Feinberg
---	--	--	---	---	---	---	--	--	--

\$2,500–\$4,999


Lois B. Feinblatt	John L. & Hope L. Furth	Sue & Melvin Gray	Mary Abbott Hess	Nancy & Stephen Karotkin	Laura & Gary Lauder	Douglas & Joanne Mason	Charles & Myra Novogrodsky	Lori Quinn & Jeff Lowenthal	Laura Rooklin
Lynn Feintech & Tony Bernhardt	George & Ellen Galland	Linda & William Green	Elaine Heuberger	Anton Katz	Beverly Shurman	Marsha S. & Edward M. Mattison	Rebecca & Alex Nussbaum	Terezia Rabai & William N. Anspach	Libby & Seth Rosen
Jesse & Vera Feldman	Joanne Gappy & Navid	Marion & Lawrence Green	Robert Hickler & Ann Lederer	Jane & Robert Katz Foundation	Roselle Lazarov	Douglas Maughan	Lee & Sharon Oberlander	Kathy & John Radford	Lisa Rosenbaum & Ronald Fisher
Susanna Felleman & Erik Feig	Mahmoodzadegan	Ilene R. Greenberg & J. Michael Maynard	Erica F. & Richard Hiersteiner	Matthew & Patricia Keenan	Suzanne & Paul G. Lazarov	Gina Maya	Jane & Daniel Och	Deborah & Jonathan Radin	Rachael & David Rosenberg
Suzanne & Stephen H. Fields	Reed Gardiner	Madelyn & Jeffrey Greenberger	Mary P. Hines	Elizabeth Baker Keffer	Hadley & Gary Lehrman	Mary McFadden & Lawrence Stifler	Suzanne A. & Andrew S. Offit	Bill Raine	Patricia & Michael Rosenblatt
Sybil & Harvey Fields	Nancy & David Gavrin	Jeffrey R. Greendorfer	Alice Hoffman	Elena Hahn Kiam & Tory K. Kiam	Bernice & Nate Leipziger	Cynthia McGuinn	Liz & Gus Oliver	Amy & Robert Rands	Fran & Eric Rosenfeld
Debra & Richard Fife	Lisa & Scott Gendell	Nonie H. Greene	Gail & Matthew Hoffman	Eduardo & Jessica Kim	Schuyler & Jonathan Levin	Louisa McPharlin	Amy & Andrew Paine	Wendy & Paul Rapisarda	Beth & Peter Rosenthal
Elizabeth Fife	Robert I. & Stacey Gendelman	Ava & Bruce C. Greenwald	Dusty Huscher	Jonathan King	Jill & Howard Fife	Michael McPharlin	Trupti & Daxesh Patel	Audrey & Albert B. Ratner	Allan Rosenzweig
Jill & Howard Fife	Susan Gibson & Mark Bergman	Honi & Dennis Greenwald	Susie Hwang & Matt Glickman	Stephen Klar	Lauren Fine & Gary Giller	Leigh & Charles Merinoff	Marla & Alan Patzik	Janet Reali & Mitchell Cobey	Adrienne B. & Bernard M. Rosof
Lauren Fine & Gary Giller	Sharon Gillis & Thomas Phillips	The Matthew L. Greer Children's Foundation	Beth A. & Stephen Israel	Amy B. Klein & Brian Lefsky	Stephen & Ellen Fine	Kelly & Ron Meyer	The Andrew S. Pauly Family	Kimberly Reisman & Patrick McKee	Ashley & Joan Ross
Stephen & Ellen Fine	Frances G. & Daniel J. Givelber	Marjorie & Nicholas Greville	Aleks Istanbullu	Bettina & Michael Klein	Lisa Finkel	Russell Miller	Sarah Pearson & Evan E. Seevak	Bonnie & Richard Reiss	Jacqueline Ross
Lisa Finkel	Robert Glatter & Jan Epstein	Jane & Allen Grossman	Pam & Lino Izzo	Abbe & Dan Klores	The Finkler-Friedland Family Foundation	Miriam & Robert Mills	Lee Pelton	Eddie Reynolds & Ed Jones Family Fund	Rose & David Ross
The Finkler-Friedland Family Foundation	Bei Lee Gold	Celeste Grynberg	Marianne Jackson	Liz & Rick Kniss	Ruth L. & Gerald D. Fischbach	Stacey & Eric Mindich	Lois Perelson-Gross & Stewart Gross	Joshua Reynolds	Sara Ross & Michael Gould
Ruth L. & Gerald D. Fischbach	Carol R. & Avram J. Goldberg	Natalie Haar	Pamela & Robert Jacobs	Blair Kohan	Atsuko & Lawrence Fish	Martha Minow & Joseph W. Singer	Gail & Berndt Perl	Laren Richardson & Casey Jensen	Heather Ross-Lowenstein & Irwin Lowenstein
Atsuko & Lawrence Fish	Bunny & Jeff Goldstein	Glad & Michael Hales	Karen & Peter Jakes	Donna & Stewart Kohl	Kathleen & Kelly Fish	Barrett Moore & Bruce Ives	Mauree Jane & Mark W. Perry	Linda & David Richter	Karen & Harry Roth
Kathleen & Kelly Fish	Linda & Alan Goldstein	Cherie & Fred Half	Susan Janosky & Lawrence Hamelsky	Lois Kohn-Claar & Gary Claar	Eric Fonberg	Jonida & Matthew Morelli	Wendy & Alan D. Pesky	Judy & Steven Rieger	Jennifer Hoos
Eric Fonberg	Myra & Bruce Goldstick	Lorie & Richard Hamermesh	Ellen & Robert Jasper	Shelley Korshak	Shui Fong	Stephen & Joy Moss	Christopher & Sara Pfaff	Robert Rivkin & Cindy Moelis	Rothberg
Shui Fong	Stephanie & Josh Goldstine	Jonathan Harries	Chip Johannessen	Patricia Kozerefski & Richard Bogomolny	Nanette & Burton Forester	Martina & Tom Murphy	Amy & John Phelan	Betty B. Robbins & Moses Silverman	Melissa & Richard Rothman
Nanette & Burton Forester	Linda Goodman & David Narefsky	Nancy & Spencer Hart	Carol Johnson	Richard Bogomolny	Alvin Franklin	Jessica & Chuck Myers	Amos & Tami Pike	David Piscuskas & Betty Gonzalez	Alice & Hugh Rovit
Alvin Franklin	Lisa Gordon	Robin Ritter	Rose Johnston	Joan & Aaron Kramer	Hugh Fraser	K. George & Carolann S. Najarian, M.D.	David Piscuskas & Betty Gonzalez	Sheila Johnson	Stacy & James Royalty
Hugh Fraser	David Gould & Elizabeth Goldberg	Hatzenbuehler & Daniel	Barbara & Paul Joskow	Michael Krantzely	John & Jill Freidenrich	Robin Neiterman	Reisel & Joseph Polak	Leslie & Doug Robinson	Roberta L. Rubin & Donald-Bruce Abrams
John & Jill Freidenrich	Elliot Gould	Hatzenbuehler	Robin Judson & Gerald Stoughton	Barbara N. Kravitz	Billy Friedman	Giselle & Casey Nelson	Joan & Mitch Polinsky	Bonnie Roche	Barbara & Jerry Rutberg
Billy Friedman	Marilynn & Ronald Grais	Deborah & Chris Heine	Linda & Alan R. Kahn	Sarah Krieger	Gisela & Jeffrey Friedman	Jake & Mina Neuberger	Adam & Maria Pollock	Dana & Dana Roffman	Shereen G. & Howard I. Rutman
Gisela & Jeffrey Friedman	Carol & James Herscot	Meg & Skip Herman	Sally & Paul R. Kanin	Faye Kroshinsky & Bennett Kaplan	Susan F. & Alan V. Friedman	Catherine & Tim Nicholls	Paul Prather	Jennie & Ian Roffman	Gabriella & Saul Safdieh
Susan F. & Alan V. Friedman	Marilyn & James Heskett	Carol N. & Arnold Kanter	Carol N. & Arnold Kanter	Boris Krtolica & Carol Sisk	Benjamin Friend	Sara Noel & Justin Oberman	Rajiv Punja & Laura Dawes	Tom & Sylvia Rogers	Lucy L. Salenger & Marvin Zonis
Benjamin Friend	James Grant & Patricia Kavanagh	Jean & Stephen Kaplan	Carol N. & Arnold Kanter	Analisa Lafontant & David Kagan	Friends of Lea	Alexandra & Michael Nolan	Kate Purmal	Kathi Roisen & Howard Goldenberg	
Friends of Lea		Joan Kaplan	Carol N. & Arnold Kanter	Brenda & Jim Lanier	Ronnie Fuchs & Samuel Rabison		Leslie & David Puth	Leila & Jamie Rome	
Ronnie Fuchs & Samuel Rabison		Marjorie & Robert Kaplan	Carol N. & Arnold Kanter	Romi & Thomas Lassally	Steve Fukuda				
Steve Fukuda					Lori & Simon Furie				

Bettylu & Paul Saltzman	Arik Shteinhaus Peter Shull	Maureen Strafford & Alex MacDonald	Amy Eldon Turteltaub & Jon Turteltaub	Nancy R. & Roy A. Wilsker
Dell & Lou Salza	Ellen & Ron Shulman	Rachel Strom & Rinze van Brug	Patricia & Mitchell Udell	Leslie Winter
Allen Samelson	Marjorie Simon	Jeff & Kerry Strong	Allison & David Ullendorff	Paula D. Wise & Roy Slovenko
Barbara Stone	Millie Rosenbloom	Paul & Susan Sugarman	Jeane Ungerleider & William Stone	Frederic Wittmann & Christine Kondoleon
Samuels & Richard Samuels	Simon & John B. Simon	James & Cathleen Sullivan	Stephanie Van Vlerah	Sue & Dick Wollack
Aviva E. Sapers & Judith T. Sydney	Patty & Richard Simon	Matthew Sinnreich	Sofie Vandeputte	Thomas & Tara Wuchenich
Janet & Victor Schachter	Pris & Robert Siskin	Arthur Sulzberger, Jr.	Andrew Viterbi	Sylva & Raffi Yepremian
Jacqueline & Jeff Schaffer	Celena & Marcus Smith	The Sunshine Fund	Robin & Bob von Halle	Eve Yohalem & Nicholas Polsky
Sue Ann & Robert Schiff	Roger & Geri Smith	Kate Lubin	Anthony & Lulu Wang	Cynthia Young
Susan & Alan Solomont	Susan & Alan Solomont	Jill & John Svoboda	Jennifer Alter Warden & Robert L. Warden	Roberta Zabel
Phyllis & Leonard Schlesinger	SuSu Sosnick	The Swett Family	Robin Washington	Deborah & Jeff Zaluda
Heidi Schulman & Mickey Kantor	David Spens QC & Robyn Spens	Roselyne Chroman	Katherine & Heath Watkin	Geena & Dennis Zaslavsky
Toni & John Schulman	Dorothy Sprague	Shelley & Ira Taub	Elizabeth Waybill	Peter Zenneck & Troels Levring
Barbara & Andrew Schultz	Anne & Mitchell Stafman	Betty Ann Taylor	We Advance, Inc.	Michael Zielenziger & Diane Abt
Ron Sege	Caren Stanley	Sydnia & Haig Tcheurekdjian	Nancy & A. Michael Weber	Jane Zinner & Tim Cuneo
Susan & Harry Seigle	Jill & Michael Stansky	Nechema Tec	David Weinberg & Jerry Newton	Jodi & Tim Zoph
Randall Server	Amy & Rob Stavis	Jean & Kenneth Telljohann	Mark Weinberg & Renee Foster	Judi & Edward E. Zuker
Koyen & Baiju Shah	Carol & Jay Stein	Audri & Stanley Tendler	Vicki & Ronald Weiner	
Lisa Shamus & Steven D. Greenfield	Nikki & Fredric Stein	Katie Thiede	Vicki & Ronald Weiner	
Rachel F. & Stephen B. Shankman	Susan & Wilf Steinberg	Brent Thomson	Lisa Weitzman	
Barbara Shapiro & Mark Lewis	Erica & Donald K. Stern	Robert Thorell	Maureen & Joseph Wekselblatt	
L. Dennis & Susan R. Shapiro Fund	Michael Stern & Kenny Alpert	Elizabeth & Stephen Thurer	Joshua G. Welch	
Valerie & Val Shapiro	Robert Stilin	Carolyn & John Tipton	Charles & Susan Whiddington	
Julie & Michael Shaw	Margaret Stohl	Lynda Tocci & Anne-Marie Fitzgerald	Karen White	
Howard Shawn	Teresa Stojkov & Steven DeMello	Patricia & Jeffrey Towbin	Trudy & Steven R. Wiesenberger	
Chantal Defay	Christine & William T. Stokes	Dyann Tresenfeld & Ed Waldrup	Patty Williams & Kenneth Turan	
Sheridan & James Sheridan	Lori & Peter Stokes	Carol & David Trower		
Lesley Shore	Patricia Stone & Charles Ortenberg			

Corporations and Foundations

The following corporations and foundations made gifts of \$1,000 or more to Facing History between July 1, 2015, and June 30, 2016. Included in this list are a number of organizations that provided in-kind gifts and pro bono services.

Commitments of \$100,000 or more will be found under the Sustaining Gift Program listings. We recognize our multiyear donors who have made commitments of up to \$99,999 by italicizing their names in the listing.

\$75,000 – \$99,999	<i>TD Bank Group</i>	Joyce M. Stielau and Herbert W. Stielau Foundation	CSAA Insurance Group, a AAA Insurer	R. Crosby Kemper Jr. Trust and Foundation
Baupost Group, LLC	UBS	United Airlines	Robert and Jennifer Diamond Family Foundation	KeyBank
The Cleveland Foundation	\$25,000 – \$49,999	Ariel Investments LLC	The Abington Foundation	Kramer Levin Naftalis & Frankel
	The Jacob and Hilda Blaustein Foundation	Johnny Carson Foundation	Allstate Insurance Company	Latham & Watkins LLP
The Conference on Jewish Material Claims Against Germany	Ernst & Young LLP	Exelon Corporation	Angelo, Gordon & Co., L.P.	Leo Burnett
GCM Grosvenor	FedEx Corporation	The Gill Foundation	AutoZone Inc.	Longleaf Partner Funds, Managed by Southeastern Asset Management
Google, Inc.	Jewish Community Foundation of Los Angeles	Karisma Foundation	BMO Harris Bank Brocade	MAA
Walter & Elise Haas Fund	\$50,000 – \$74,999	The Assisi Foundation of Memphis	C-III Capital Partners LLC	Microsoft
The Lebovitz Family Charitable Trust	The J.R. Hyde III Family Foundation	The Libra Foundation	City National Bank Community Foundation of Greater Memphis	National Development
	The David & Lucile Packard Foundation	<i>The Price Family Foundation</i>	Harold McAlister Charitable Foundation	<i>Neshamot Fund of UJA-Federation of New York</i>
			Segal Family Foundation	Perkins Coie LLP
			State Street Foundation	The Picower Foundation
			Contrarian Capital Management, L.L.C.	Pricewaterhouse Coopers LLP
			Island Capital Group LLC	The PrivateBank–Chicago
			Martha Holden Jennings Foundation	Raffles Capital Management, LLC
			Goldman Sachs & Co. Boston	
			Goulston & Storrs, P.C.	
			Roy A. Hunt Foundation	
			Hyatt Legal Plans	
			Island Capital Group LLC	
			Martha Holden Jennings Foundation	
			Kaiser Permanente Kelman-Lazarov, Inc.	

The Rose Hills Foundation	Colliers International The Community Foundation of Greater Chattanooga	Longhill Charitable Foundation	\$2,500 – \$4,999	Hutchison School	St. George's Independent School	Covidien Matching Gift Program
Royal Bank of Canada Foundation	Foundation of Greater Chattanooga	Nancy Lurie Marks Family Foundation	Anonymous	Intrepid Capital Management	Stax, Inc.	Cuyahoga Arts and Culture
Lawrence J. and Anne Rubenstein Charitable Foundation	Cotchett, Pitre & McCarthy, LLP	Mayer Brown LLP	The Atlantic Philanthropies	Irving Harris Foundation	The Summa Group	Goodlett Foundation
The Seabury Foundation	Cupertino Electric, Inc. Eastern Real Estate, LLC	Memphis Jewish Federation	Director/Employee Designated Gift Fund	Kemmons Wilson Family Foundation	UBS Wealth Management - Gignilliat Group	Hawken Middle School
Seward & Kissel LLP	The Cyrus Eaton Foundation	Munger Tolles & Olson	Banks-Baldwin Foundation	Key Public Strategies	Harold and Anna S. Ullian Charitable Foundation	Armin and Esther Hirsch Foundation
Shamrock Holdings, Inc.	First Tennessee Bank	Nellie Mae Education Foundation	Baptist Memorial Health Care	Lausanne Collegiate School	The Wharton Charitable Fund	Huey's Restaurant
Leo M. Shortino Family Foundation	Gold Family Foundation	New Vernon Capital	BlueCross BlueShield of Tennessee	Lionsgate Entertainment Company	Young Presidents Organization - Los Angeles	Lichterman Loewenberg Foundation
The Sidman Family Foundation	Goldman, Sachs & Co. Matching Gift Program	The Dorothy and Jonathan Rintels Charitable Foundation	Blum-Kovler Foundation	Macfarlanes LLP	Dan and Ellen Zelman Family Foundation	Linde Family Foundation
Trustees Under the Will of Herman Dana	Hansen, Jacobson, Teller, Hoberman, Newman, Warren, Richman, Rush & Kaller, LLP	Rosen Bien Galvan & Grunfeld LLP	Butler Family Fund	Magnificat High School		Littler Mendelson
Wells Fargo	ITW	Rouda, Feder, Tietjen & McGuinn	Calfee, Halter & Griswold LLP	The Carl Marks Foundation Inc.		Medtronic
The Thomas H. White Foundation, a KeyBank Trust	Jewish Community Endowment Holocaust Memorial/Education Fund	Saama Technologies Salesforce.com Foundation	CBRE Memphis	Media Rights Capital		Oxford Bank & Trust
YWCA of the Mid-Peninsula Donor Advised Fund	Jones Day Just City, Inc. Laurel School	Scotiabank	The College Initiative	Memphis Grizzlies Charitable Foundation	\$1,000 – \$2,499	Peoples Gas
	Harry and Yvonne Lenart Charitable Foundation	Seven Post Investment Office LP	Cummins Inc.	Memphis University School	Anonymous	Perry Capital, LLC
\$5,000 – \$9,999	Frederick Lobl for Charities, Bank of America, N.A., Trustee	Charles & M. R. Shapiro Foundation	Donnell-Kay Foundation	Methodist Le Bonheur Healthcare	Alliance Bernstein L.P. Matching Gift Program	Red Sox Foundation
AHS Foundation	Loeb & Loeb LLP	Silicon Valley Community Foundation	Encana Cares (USA) Foundation	Jim Norton & Deborah Norton	Art Village Gallery	Dianne H Ruthman Family Foundation
John and Hilda Arnold Foundation		Steyer Lowenthal	The Harry K. Fox & Emma R. Fox Charitable Foundation	Paragon National Bank	Avenue Capital Management II, LP	Temple Beth Shalom
Athena Capital Advisors, LLC		Boodrookas Alvarez & Smith LLP	The Charles Robert Gens Foundation	Planned Parenthood Memphis	Avon Products Foundation, Inc.	Town of Sharon
Boies Schiller Flexner LLP		Thompson Hine LLP	Gerber Taylor John & Marcia Goldman Foundation	Regional One Health RPM International Inc.	Babson College	TwinFocus Capital
Brahman Capital Corp.		Ulmer & Berne LLP	Ulysses S. Grant National Historic Site	Sheffield Asset Management, LLC	Judith Knell Binder Family Foundation	United Talent Agency
Thomas W. Briggs Foundation Inc.		Emanuel & Anna Weinstein Foundation	Huntington National Bank	The Silverweed Foundation	Blue Cross Blue Shield of Massachusetts	United Way of Greater Cleveland
Britex Fabrics				Spaces Group	Breakfast Club of America Inc.	U+I Group Plc
Butler Snow LLP					Colorado Health Foundation	Frederick R. Weisman Philanthropic Foundation
					Combined Jewish Philanthropies	Westchester Reform Temple
						William DeWoskin & Associates
						Arthur & Charlotte Zitrin Foundation

"This course pushed me to be more selfless, to do the right thing without hesitation. I will fight for myself and for those who can't."

MELISSA SPINOLA
FACING HISTORY STUDENT

Permanently Restricted (Endowed) and Special Funds

Many friends of Facing History have helped to establish the following endowed and special funds that support particular aspects of Facing History's work. Donors to these funds between July 1, 2015, and June 30, 2016 are listed.

Rev. Robert W. Bullock International Fellowship

This scholarship program brings scholars to Facing History to lend their expertise to Facing History staff, teachers, and the community at large.

The David & Lillian Casty Fellowship Program

This program promotes a scholarly exchange and cultivates global ambassadors for Facing History by bringing a journalist, scholar, or resource speaker to Facing History for a year of residency.

Leo Dunn Endowed Fund

This fund supports the purchase of books and resource materials for the Facing History Library and Resource Center.

The Executive Director Endowed Fund

This fund has been established to endow the Executive Directorship of Facing History and Ourselves.

Rhoda Baruch

The Honorable Ann W. Brown & Donald A. Brown

Josh & Sarah Greenhill

Elizabeth E. & Daniel J. Jick

Julie & Paul Leff

The Facing History and Ourselves Celebration Fund

The Facing History and Ourselves Celebration Fund for Margot Stern Strom was established to honor Margot Strom's unparalleled contributions to Facing History and her visionary leadership since its founding. The fund will support the expansion of Facing History's impact by providing resources for a significant marketing initiative to advance our work globally.

Laura Aryeh Murawczyk & Richard Murawczyk

Jane & Daniel Och

William Randolph Hearst Endowment Fund for Summer Seminars

This fund provides support for Facing History's summer seminars in New York.

The Beth and Seth Klarman Innovation Fund

In honor of Beth and Seth Klarman, this fund is directed by Facing History's President and CEO to fund new ideas, innovations, and initiatives that advance the mission of Facing History and Ourselves.

The Bea Kovich Fund

In loving memory of Bea Kovich, this fund supports Facing History School graduates as they pursue their post-secondary school goals and dreams.

Gene Krieger Fund

In memory of Gene Krieger, this fund will help Facing History expand and sustain the Los Angeles Partnership Schools Network.

Charlene Achki-Repko
Stephen Alexander
Colette Bablon Ament &
Jerry Ament

Lisa Bates
Lili & Jon Bosse
Ronda & Stanley H.
Breitbart

Sue & Barry Brucker
Tom Camp
Samuel Chaj
Grace & Robert Chen

Pamela & Loren Cohen
Stacie & Aaron Cohen
Eftihia Danellis
Abigail Disney & Pierre

Hauser
Sheri & Roy Disney
Tim & Neda Disney
Joan & William D.

Feldman
Nanette & Burton
Forester
Kathleen & John Galli

Reed Gardiner
Vivian Geiger
Lauren Glassman & Paul
De Meo

Gold Family Foundation
Denise Greskoviak
Jane & Eric Herzog
Eric Juline

Evan Klondar
Sarah Krieger
Nancy & John Lee
Chip Lightfoot

Loeb & Loeb LLP
Susan Disney Lord &
Scott Lord

Rochelle & Richard
Maize
Douglas Maughan
Chris Milton

Thomas Murnane
The Andrew S. Pauly
Family
PricewaterhouseCoopers

LLP
Cindy Quane
Carolyn & Ken Richman
Elba & David Robbins

Marvin Schultz
Shamrock Holdings, Inc.
Marc Silverman &
Mitra Best

Karen & Emanuel Solon
Annsley & George
Strong
Karen Sulzberger & Eric

M. A. Lax
Robert Thorell
Karen & Stuart P.
Tobisman

Liz Vogel
Martin Weisman
Sandy Weisman
Janice White

Tom Willis
Keith Wishon
Barbara Zubi

The Memphis Fund

This fund supports resources for additional initiatives and resources benefiting the Facing History program in Memphis.
Linda Ellen & Ron Sklar

The Milt Morris Facing History Educator Scholarship Fund

In honor of Milt Morris, this endowed fund supports scholarships for summer seminars and follow-up services for teachers in Greater Colorado.

The Charlotte & Irving Rabb Fund for Teaching Fellowships

This endowed fund supports teacher scholarships for summer seminars as well as follow-up meetings throughout the year with Facing History staff.

The Rhoda Sapers Library Endowment Fund

This fund supports the purchase of new videos and books for the Facing History Library and Resource Center.

Sidney and Edith Simon Family Holocaust Education Fund of the Jewish Federation of Cleveland

This fund supports the design and delivery of teacher professional development in Holocaust education.

The Richard A. Smith Endowment Fund for Excellence

This fund is designated to identify the most engaged, committed, and excellent teachers and then support scholarships for them to attend advanced summer seminars.

The Laszlo N. Tauber Family Foundation Fund

This fund established the Margot Stern Strom endowed fund to support a fellowship, the purpose of which is to cultivate new talent for Facing History to support organizational needs. The fellowship will fund a staff position to be located at Facing History and Ourselves' headquarters or in one of our regional offices.

In-Kind and Pro Bono Gifts

Generous in-kind gifts and pro bono professional services donated by our friends and supporters increase Facing History and Ourselves' ability to engage students and educators worldwide. Corporate donors of in-kind gifts and services are listed separately, and we are grateful for their support. Board and committee members, and many other volunteers, contribute countless hours and expertise, and we are most grateful to them. Here, we thank individuals who have donated their professional time, home or office space, or gifts of artwork, equipment, or supplies.

Colette Bablon Ament & Jerry Ament	Karen & Jerry E. Ehrlich	Julie & Paul Leff Shelley S. & Donald	Susie Richardson Carolyn & Ken	Karen Tucker & Jerry Avorn
Sam & Josée Bak	Elizabeth Fife	M. Levy	Richman	Andie & Michael
Judi Bohn	Tina & Bob Fockler	Christopher D. Lueking	Connie & James Shapiro	Uiberall
Bonnie Boswell & Rod Hamilton	Judy & Joshua Goldman	Mark Moss	Ginger & William	Regina Renee Ward
Holly & Bill Brooks	Gigi Grayson	David Weinberg	Sherak	Hon. Rebecca Westerfield (Ret.) &
Pamela & Loren Cohen	Mimi Grossman	Kimberly & Elliot Perry	Suzy Shuster &	Ivy Fine
Annabel Conrad & Iddo Patt	Iris & Ronald M. Harkavy	Lisa & Richard Perry	Rich Eisen	James Wildman
	Lari & Peter Jacobson	Sue & Bernie Pucker Pucker Gallery	Margaret Stohl	Judy Wise

"This was an emotional journey but a worthy one. There is nothing from this seminar that I cannot use in either my classroom, with my staff, or in my daily life."

EDUCATOR LESLIE SMITH

Gifts in Tribute

Facing History and Ourselves is grateful to those donors who made gifts in tribute totaling more than \$590,000 to support our work. Listed below are those individuals for whom tribute gifts were made totaling \$100 or more. We are grateful for gifts at all levels, which support our work with teachers and students.

IN HONOR OF	Ellen Carmell	Wendy & Ben Fischman	Sheila Katz Elaine Kaufman	Barbara & Rick Melcher
Ida & Myles Abbott	Gloria & Jack Clumeck	Annabel Fleiss	Jay Kaufman	Zachary Milbauer
Charlene Achki-Repko	Lizzie Cohen	Tina Fockler	Bridget Keenan	Linda Miner
Elisabeth Andreason & Melissa Allen	Pamela Cohen	Diane Frankle	Kelman Lazarov	Dale & Bob Mnookin
Dimitry Anselme	Caroline Conroy	Howard Freedman	Dale Kelman	Christy Morcomb & Laurie Hudson
Carolyn & Chuck Arnold	The Cornfield Family	Sally Frishberg	Marty Kelman	Eileen Nelson
Larry Banack	Sally Currier & Saul Pannell	David Fulton	Shelly & Howard Kivell	The Newman Family
Deborah Barber	Joe Daly	Nancy & Nat Gardiner	Aleeza Klarman	Bonnie Oberman
Nancy & Jon Bauer	Ariella Damelin	Jill Garling & Tom Wilson	Ilana Klarman	Jane & Dan Och
Cathy Beck	Lee Daniels	Ann Geldzahler	Jeremiah Klarman	Erin Ostrow
Steven Becton	Joan Davis	Nina & Ron Gilson	Seth Klarman	Lisa & Rick Paige
Muriel Behar	Shira Deener	Benjamin Gomez	Maja Kristin	Heidi & Lew Pearlson
Kathy Bellomo	Jill & Alex Dimitrief	Ann Gordon	Karen & Mel Kronick	Lisa & Richard Perry
Selwin Belofsky	Emily Dreifus & Mark Maremont	Ashlyn Gorlin	The Leff Family	Rebekah Pierson & Magda Spasiano
Sherie Berger	Jane Edmonds	Rita Halbright	Julie & Paul Leff	Donald Putnoi
Phyllis & Paul Berz	Cheryl & David Einhorn	Nancy & Jeffrey Halis	Don Levy	Carole Reed
Mitra Best	Kevin Feinberg Family	Karen Harrison & Walter Freedman	Peggy & Larry Levy	Barbara Reiss-Snyder & Jim Snyder
Gene & Rich Bindler	Bill Feldman	Ann & Mason Hawkins	Shirley Levy	Joshua Reynolds
Susie & Rick Block	Lori & Mark Fife	Tina & Paul Henderson	Ira Lipman	Susie Richardson
The Blum Family	Rena Finder	Howard Holtzman	Angela & Christopher Lovest	Carolyn & Ken Richman
Joanne & Scott Blum	Sallie Fine-Lewin	Roxanne Hori & Robert Felsenthal	Lori & Hal Luft	Heidi & Richard Rieger
Jared Boessé	Fischman Family	Lynn Howard	Fran Malkin	Amy Rogat
Judi Bohn	Laura Fischman & Tony Schwenson	Emily Ingalls	Susan & B. Lee Mallory	Hedy & George Rozsa
Stefanie Bradie	Nancy & Steve Fischman	Floy Kaminski	Marguerite & Rod Mattison	Gina & Tom Russo
Daniel Braunfeld	Lynda & Jeff Busgang	Steve Fischman	Paul Meister	Zayden Sanders- Magee
Roger Brooks				

Boards and Leadership

Facing History is most grateful to the members of our Board of Directors, Leadership Council, Advisory Boards, and Board of Scholars, who govern the organization, provide philanthropic support, engage their communities, and serve as thought leaders for our work around the world. Here, we list members during the period of July 1, 2015, through June 30, 2016.

Board of Directors

Chair

Julie Abrams Leff

Members

Kwame Anthony Appiah
Paul H. Berz
Jeffrey J. Busgang
Ellen B. Carmell
Ronald G. Casty
Cheryl Strauss Einhorn
Debra Engel
David P. Fialkow
Lori R. Fife
Mark S. Fife
Cristina S. Fockler
Jill Garling
Karen G. Harrison
Judy Heyboer
Andrew S. Janower
Elizabeth E. Jick
Anne Juster
Jill Ellen Karp
Seth A. Klarman
Emily Leventhal
Lawrence M. Levy
Richard I. Melvoin
Martha Minow
Lisa Mooney
Jane C. Och

Tracy Palandjian

Saul Pannell

Richard Perry

Ryan Prince

Susie Richardson

Carrie Richman

Lesley Shore

Dana W. Smith

Robert A. Smith

Karen Tucker

Trish Tullman

Judy Wise

Chair Emeritus

Richard A. Smith

Leadership Council

Co-Chairs

Jeffrey J. Busgang
Seth A. Klarman

Members

Amy L. Abrams
Colette Bablon Ament
Gary Angel
Alan Arkatov
Jennifer Aubrey
Betty S. Bardige
Patricia S. Bellinger
Pascale E. Berner

Phyllis Berz

Susan G. Block

Thomas W. Blumenthal

Holly Brooks

Lynda Busgang

Sandra D. Carpenter*

Cecilia Chan

Anla Cheng

Matt Damon

Samantha Perry David

Laura DeBonis

Jill Dimitrief

Michael S. Feldberg

Sumner Feldberg*

William D. Feldman

Wendy Fischman

Walter G. Freedman

Kathy Fuld

Ruthanne Fuller

Leslie Gilbert-Lurie

Daniel J. Givelber

Michael L. Gordon

Judy Greffin

Steven Grossman*

Rita S. Halbright

Ann B. Hawkins

Jill Iscol

Ira A. Jackson*

Floy B. Kaminski

Paul R. Kanin

Daniel S. Katz

John A. Katzenberg

Jay H. Kaufman

Marty Kelman

Beth S. Klarman

Emily Leventhal

Karen Secunda Levy

Michael B. Lowenstein

Susan Hastings Mallory

Michael Mazer

Richard Melcher

Evan Meyers

James F. Mooney, III

Jo Ann & Stuart

Nathan*

Erin Ostrow

Andrew S. Pauly

Heidi Pearlson

Kathy Richland Pick

Ellen Poss, M.D.*

Bernard Pucker

Michael Pucker

Eddie Reynolds*

Alison Richardson

Bruce Rigal

Terrence Roberts

Thomas A. Russo

Michael K. Sapers

Rhoda B. Sapers*

Elinor A. Seevak*

Ricky Shechtel

Marjorie Simon

Gwenn Masterman

Snider

Donald K. Stern

Gerald M. Stern

Kenneth A. Sweder

Dorothy P. Tananbaum

Susan W. Tofias,

M.S.W.

Dora Z. Ullian

Shirley Wang

Sharon Weintraub

Nancy R. Wilsker

Sue Berman Zamkow

Officers of the Corporation

President and CEO

Roger Brooks

Treasurer

David Orlinoff, as of
November 2015
Elizabeth E. Jick,
through
November 2015

Secretary/Clerk

Martin Sleeper, as of
November 2015
Dana W. Smith, through
November 2015

General Counsel (Pro Bono)

Brown Rudnick LLP

Board of Scholars

Chair

Kwame Anthony Appiah

Members

Marjorie Agosin
Peter Balakian
Benjamin R. Barber, Ph.D.
Yehuda Bauer
Michael Berenbaum
Irwin Blumer
Paul Bookbinder
Leon Botstein
Mary C. Boys
Mary C. Brabeck,
Ph.D., D.H.L.
James Carroll
Arn Chorn Pond
Deborah Dwork
Melinda Fine
Howard E. Gardner
Henry Louis Gates, Jr.
Carol Gilligan
James F. Gilligan
Sol Gittleman
Pumla Gobodo-
Madikizela, Ph.D.
Peter Hayes
Richard Hovannisian
Ellen Hume
Hon. Michael Ignatieff,
P.C., M.P.
Jonathan Judaken
Michael J. Klarman
Claudia Koonz
Lawrence L. Langer

Hillel Levine

Ethan Lowenstein

Martha Minow

Robert H. Mnookin

Azar Nafisi

Sonia M. Nieto

Pedro Antonio Noguera

Padraic O'Hare

Farah Pandith

David A. Patterson

John T. Pawlikowski

Alvin F. Poussaint, M.D.

Fernando Reimers

John K. Roth

Allan A. Ryan

Robert L. Selman, Ph.D.

John Shattuck

Rev. Kevin P. Spicer,

C.S.C.

Ervin Staub

Claude M. Steele, Ph.D.

Dorothy M. Steele,

Ed.D.

Carola Suarez-Orozco

Marcelo Suarez-Orozco

Barry Trachtenberg

Chad Williams

Committees of the Board

AUDIT COMMITTEE

Chair

Alan Goldstein

Members

John Mokas
Michael K. Sapers

COMPENSATION COMMITTEE

Chair

Andrew S. Janower

Members

Ronald G. Casty
Elizabeth E. Jick
Julie Abrams Leff
Tracy Palandjian
Robert A. Smith

DEVELOPMENT COMMITTEE

Chair

Jill Garling, as of
November 2015
Lisa Mooney, through
November 2015

Members

Paul H. Berz
Debra Engel
Lori R. Fife
Wendy Fischman
Seth A. Klarman
Julie Abrams Leff
Susie Richardson
Dana W. Smith
Judy Wise

EXECUTIVE COMMITTEE

Chair

Julie Abrams Leff

Members

Jeffrey J. Busgang
Cristina S. Fockler
Jill Garling
Andrew S. Janower

Elizabeth E. Jick
Seth A. Klarman
Richard I. Melvoin
Lisa Mooney
Dana W. Smith

FINANCE COMMITTEE

Chair

Elizabeth E. Jick

Members

Carl Blanchard
Jeffrey J. Busgang
Andrew S. Janower
Julie Abrams Leff
Emily Leventhal
John Mokas
Heidi Pearlson
David Schechter

GOVERNANCE COMMITTEE

Chair

Richard I. Melvoin

Members

Patricia S. Bellinger
Ellen B. Carmell
Cristina S. Fockler
Jill Garling
Karen G. Harrison
Julie Abrams Leff
Tracy Palandjian
Dana W. Smith

AD-HOC GOVERNANCE REFORM COMMITTEE

Chair

Jill Garling

Members

Cristina S. Fockler
Karen G. Harrison
Julie Abrams Leff
Lawrence M. Levy
Richard I. Melvoin
Andrew S. Pauly

CHICAGO ADVISORY BOARD

Chair

Trish Tullman

Members

Eric Adelstein
Gene Bindler
John Brooklier
Ellen B. Carmell
Kevin Carroll
Steve Cohen
Linda B. Coleman
Theresa Cothorn
Jill Garling
Karen G. Harrison
Vicki Heyman
Mark S. Hoplamazian
Roxanne Hori
Francis Idehen
Stacy Sharpe Jones
Matthew C. Levin
Christopher D. Lueking
Paul Meister
Richard Melcher
Peter J. Miller
Linda K. Miner
Jo Ann Nathan
Stuart Nathan
Langdon Neal
Joanne Nemerovski
Kathy Richland Pick
Michael Pucker

Nneka Rimmer
 Michael J. Sacks
 Peggy Salamon, M.D.
 Carole Segal
 Gordon Segal
 Monica Swope
 Dr. Manika Turnbull
 Judy Wise

**CLEVELAND
 ADVISORY BOARD**

Chair
 Anne Juster

Members

Carolyn Arnold
 Susan G. Block
 Holly Brooks
 Amy K. Carlson
 Joaquin Dos Reis
 Robyn Fearon
 James A. Goldsmith
 Emily Ingalls
 Jane Joseph
 Eduardo Kim
 Gareth Libbey
 Todd Lloyd
 Linda McDonald
 Jonida Preka Morelli
 Shelly Saltzman
 Sonni Senkfor
 Koyen Shah
 Marjorie Simon
 David L. Stashower
 Cynthia Tancer
 Mary Ann Vogel
 Trudy Wiesenberger
 Khalilah Worley

Emeritus
 Howard J. Freedman
 Joyce S. Glickman
 Amy Rogat
 Loung Ung
 Sally H. Wertheim

**DENVER/ROCKY
 MOUNTAIN STATES
 ADVISORY BOARD**

Chair
 Linda Campbell

Members

Mary Ann Amemiya
 Elaine Gantz Berman
 Sarah Melvoin Bridich
 Combis "CJ" Chapman
 Meredith Dabberdt
 Bill Fulton
 Ann Geldzahler
 Tom Gordon
 John A. Katzenberg
 Megan Kemper
 Michael Mazer
 Kathy Neustadt
 Frances T. Pilch
 Jon Pushkin
 Stephanie Rossi
 Jason Schall
 Angelika Schroeder
 David Shneer, Ph.D.
 Jack Sparks
 Vanessa Thomas-
 Jones
 Tom Thorpe
 Annette Lantos
 Tillemann-Dick

**LONDON ADVISORY
 BOARD**

Chair
 Ryan Prince

Members

Sindy Caplan
 Rita S. Halbright
 Terence Johnson
 Lawrence M. Levy
 Peggy Levy
 Hannah Lewis
 David Meller
 Daniel Peltz
 Michelle Pinggera
 Kaushik Ray
 Bruce Rigal
 Cliff Siegel
 Robyn Spens
 Lisa Tedeschini
 Susan Whiddington
 Judy Wise
 Sue Berman Zamkow

**LOS ANGELES
 ADVISORY BOARD**

Chair
 Carrie Richman

Members

Charlene Achki-Repko
 Colette Bablon Ament
 Jordan Bahat
 Mitra Best
 Joanne Blum
 Bonnie Boswell
 Aaron Cohen
 Pamela Rubin Cohen,
 Ed.M.
 Dean Devlin
 Marc Dworsky

William D. Feldman
 Susan Friedman
 Jane S. Herzog
 Paul R. Kanin
 Andrew T. Kugler
 Jake Neuberger
 Andrew S. Pauly
 Terrence Roberts
 Jason D. Russell
 Florence Sloan
 Gerald M. Stern
 Jesse Stern
 Margaret Stohl
 Karen Sulzberger
 Janice White
 Mandy Adams Wolf

**MEMPHIS
 ADVISORY BOARD**

Chair
 Cristina S. Fockler

Members

Joey Beckford
 Janice Berlin
 Paul H. Berz
 Phyllis Berz
 Frank Buscher
 Reggie Crenshaw
 John Daniel
 Jerry E. Ehrlich
 Tara Engelberg
 Miriam D. Grossman
 Ann B. Hawkins
 Mason Hawkins
 Jason Hernandez
 Carol Johnson
 Dorothy Johnson
 Elaine Kaufman
 Marty Kelman
 Daniel Kiel

Meggan Wurzburg
 Kiel
 Donald Levy
 Joanna Lipman
 Susan Hastings
 Mallory
 Joyce Margulies
 Mary McDonald
 Erin Ostrow
 Adrienne Pakis-Gillon
 Iddo Patt
 Doug Schrank
 Glenn Sessoms
 Linda Ellen N. Sklar
 Joan Terry
 Patricia Toarmina
 Van Turner
 Jennifer Turner-
 Koltnow
 Andie Uiberall
 Monica Wharton
 Barbara J. Williams

**NEW ENGLAND
 ADVISORY BOARD**

Chair
 Karen Tucker

Members

Patricia S. Bellinger
 Jeffrey Bloomberg
 Lisa Blumenthal
 Lynda Bussgang
 Beth Clymer
 Gretchen Cook-
 Anderson
 Sally Currier
 James Andrew
 Watson David
 Jane Edmonds
 Marsha Feinberg

Rena Finder
 Wendy Fischman
 Tyler Hardy
 Tina Henderson
 Jill Ellen Karp
 Susan Kaufman
 Emily Leventhal
 John F. Levy
 Karen Secunda Levy
 Kristen Lucken
 Dale S. Mnookin
 Lisa Mooney
 Tracy Palandjian
 Heidi Pearlson
 Deborah Plummer
 Frances S. Putnoi
 Marci Sapers
 David Schechter
 Stacy Scott
 Dana W. Smith
 Gwenn Snider
 Jody Snider
 Julie Swartz
 Kate Taylor
 Susan W. Tofias

**NEW YORK
 ADVISORY BOARD**

Chair
 Mark S. Fife

Members

Jennifer Aubrey
 Jon R. Bauer
 Pascale E. Berner
 Zoe Bernstein
 Rob Beyer
 Cecilia Chan
 Anla Cheng
 Lee A. Daniels
 Jill Dimitrief
 Mark Federman
 Michael S. Feldberg
 Lori R. Fife
 Kathy Fuld
 Joseph Jackson
 Floy B. Kaminski
 Shelly Kivell
 Julie Abrams Leff
 Rachel Levin
 Michael B.
 Lowenstein
 Evan C. Meyers
 Mark Najarian
 Jane C. Och
 Lisa Paige
 Richard Perry
 Heidi Rieger
 Mara Sandler
 Judith C. Siegel
 Katrin Sosnick
 Rachel Strom

Dorothy P. Tananbaum
 David R. Trower
 Kate Waisman
 Shai Waisman

**ONTARIO ADVISORY
 BOARD**

Chair
 Lesley Shore

Members

Ronald Hoffman
 Nate Leipziger
 Madeleine Levy
 Myra Novogrodsky
 Jeff Rayman
 Carole Ann Reed
 Susan Steinberg
 Betty Ann Taylor
 Sharon Weintraub
 Margaret Wells
 Margie Wolfe

**SAN FRANCISCO
 BAY AREA
 ADVISORY BOARD**

Chairs
 Debra Engel
 Judy Heyboer

Members

Ida Abbott
 Deborah E. Barber
 Gloria Brown
 Gloria Clumeck
 Caretha Coleman
 Asha S. Collins, Ph.D.
 Matt Daniels
 Dennis Driver
 Barbara Elsberg
 Sandra Feldman
 Diane Holt Frankle
 Judy Goldman
 Marina Gorbis
 Jeffrey R. Greendorfer
 Chad Jaben
 Ed Jones
 Evan F. D. Jones
 Daniel S. Katz
 Karen Kronick
 Christopher Lovest
 Hal Luft
 Lori Luft**
 Ana McCracken
 Deborah Mueller
 Joni Podolsky
 Barbara Reiss-Snyder
 Eddie Reynolds
 Joshua Reynolds
 Joyce Reynolds-
 Sinclair

Susie Richardson
 Michael Sandberg
 Sue Ann Schiff
 Connie Shapiro
 Barbara Sonneborn
 Sharman Spector-
 Angel
 Barbara Spreng
 Hon. Rebecca
 Westerfield (Ret.)
 Jayne Williams
 Jane Zinner

**Honorary
 ** Facing History
 and Ourselves
 acknowledges with
 great sadness the loss
 of our cherished friend
 and board member
 who passed away this
 year, Lori Luft. We
 remain ever grateful
 to have been guided
 by her wisdom, and
 will continue to be
 enriched by the time
 she shared with us.*

"I learned that I'm not the type to just turn the other way and just let things happen, and I am more than what people see on the outside."

FACING HISTORY STUDENT DAYAUNA BOYD

Staff

Facing History staff from from July 2015–June 2016.

Office of the President

(alphabetical)

Roger Brooks
President & Chief Executive Officer, Headquarters

Anne Burt
Chief Communications Officer, New York

Jeremy Cramer
Chief Development Officer, Headquarters

Michael Durney
Chief Operating Officer, Headquarters

Anne-Marie Fitzgerald
Chief Officer for Regional Operations, Headquarters

Brooke Harvey
Director of Content Development, Headquarters

David Orlinoff
Chief Financial Officer, Headquarters

Marc Skivsky
Vice President & Chief Program Officer, Headquarters

Martin Sleeper
Special Advisor to the President, Headquarters

Chris Stokes
Senior Director, Organizational Advancement, Headquarters

Margot Stern Strom
Senior Scholar & President Emerita, Headquarters

Terry Tollefson
Chief Strategy Officer, Headquarters

Facing History Staff

(alphabetical)

Taymullah Abdur Rahman
Program Associate, New England

Gillian Aitken
Development Associate, Canada

Dan Alba
Senior Program Associate, Los Angeles

Hepzibah Alon
Program Associate, Jewish Education, Home Office

Sarah Altschul
Program Associate, San Francisco Bay Area

Eriko Amino
Office Manager, New York

Lucas Anderson
Technical Support Associate, Headquarters

Dimitry Anselme
Program Director for Staff Development, Headquarters

Iman Azzi
Financial Accounts Manager, United Kingdom

Anika Bachhuber
Associate Director, Digital & Print Content Development Operations, Headquarters

Dennis Barr
Director of Evaluation, Headquarters

Karen Barss
Director of Program Strategy & Special Projects, Headquarters

Kate Boylan
Digital Archivist, Headquarters

Steven Becton
Associate Program Director, Urban Education, Memphis

Sara Bellin
Project Manager for Jewish Education, Headquarters

Ava Berinstein
Associate Director, Grant Programs, Headquarters

Emily Blackie
Manager, Communications Operations, Cleveland

Gretchen Blake
Assistant Director, Development, Los Angeles

Jared Boesse
Associate Director, Information Technology, Headquarters

Judi Bohn
Special Projects Coordinator, New England

Farrell Boucher
Senior Development Officer, New England

Kate Boylan
Digital Archivist, Headquarters

Daniel Braunfeld
Program Associate, New York

JuLondre Brown
Development Coordinator, New York

Marissa Caney
Benefits Manager & Human Resources Associate, Headquarters

Esther Carey
Administrative Assistant, New York

Leslie Caroline
Administrative & Program Coordinator, Los Angeles

Juan Castellanos
Senior Program Associate, New York

Deb Chad
Program Director for Technology, Headquarters

Mark Chapin
Associate Director, Video Production, Headquarters

Chase Chenevert
Graphic Designer, Headquarters

Amy Clatworthy
Director of Operations & Systems Infrastructure, Headquarters

Elena Cohen
Program Coordinator, New York

Elizabeth Cohen
Assistant Director, Development, Chicago

Francesca Colletti
Program Director, New England

Denny Conklin
Program Associate, New England

Emily Corwin
Grants Writer & Development Coordinator, Headquarters

Jon Cramer
Director of Human Resources, Headquarters

Ellen Cumba
Office Manager & Program Coordinator, Memphis

Allison Cunningham
Assistant Director, Board & Leadership Relations, Headquarters

Carole Danforth
Custodial Services Coordinator, Headquarters

Jill Dannay
Director of Development Information Systems, Headquarters

Jan Darsa
Director, Center for Jewish Education, Headquarters

Vimla Dayal
Development Coordinator, Chicago

Miles de Klerk
Desktop Support Technician, Headquarters

Shira Deener
Associate Program Director, Headquarters

Izabelle Denize
Administrative Assistant, New York

Pamela Donaldson
Senior Program Associate, Cleveland

McKinley Doty
Facing History Together Coordinator, Memphis

Kristin Duns
Program & Development Assistant, Cleveland

Frances Early
Program Assistant, New York

Tammy Edinger
Custodial Services Assistant, Headquarters

Hedrick Ellis
Director of Online Learning, Headquarters

Abby Elmore
Special Assistant to the Senior Scholar, Headquarters

Nancy Englander
Director, Project Financial Operations, Headquarters

Dan Eshet
Senior Editor for Historical Research, Headquarters

Veronica Favela
Program & Development Assistant, Cleveland

Kevin Feinberg
Associate Program Director, New York

Brian Fong
Program Associate, New England

Stephen Ford
Special Advisor to the Chief Financial Officer, Headquarters

Jaclyn Foster
Program Data Specialist, Headquarters

Heather Frazier
Senior Program Associate, Denver/Rocky Mountain States

David Fulton
Office Director, Denver/Rocky Mountain States

Elizabeth Garcia
Program & Office Coordinator, Los Angeles

Denise Gelb
Associate Program Director, Chicago

Rachel Ghidoni
Custodial Assistant, Headquarters

Ernestine Gianelly
Receptionist, Headquarters

Rachel Gilbreath
Assistant Director, Development Events, Headquarters

Phyllis Goldstein
Senior Associate, Curriculum Resource Development, Headquarters

Ashlyn Gorlin
Associate Director, Human Resources, Chicago

Margaret Gouthro
Office Services & Facilities Manager, Headquarters

Mara Gregory
National/International Project Manager, Headquarters

Carol Griffin
Associate Director, Human Resources, Headquarters

Nancy Griffin
Program Data Manager, Headquarters

Wayde Grinstead
Program Associate, Chicago

Elaine Guarnieri-Nunn
Office Director, San Francisco Bay Area

Arthur Guercilena
Senior Technical Support Associate, Headquarters

Pam Haas Schwab
Director of Development, New York

Kimberly Hall
Instructional Designer, Online Learning, Headquarters

Renee Harleston
Program Coordinator, New York

Mary Hendra
Associate Program Director, Los Angeles & Organizational Advancement, Los Angeles

Nicole Hertzberg <i>Senior Development Officer, New York</i>	Erin Kernen <i>Operations Manager, Headquarters</i>	David Levy <i>Senior Program Associate, New York</i>	Michael McIntyre <i>Senior Programme Coordinator, United Kingdom</i>	Jana Neil <i>Senior Development Officer, San Francisco Bay Area</i>	Alissa Parra <i>Coordinator, Publishing & New Media, Headquarters</i>	Stephanie Ramos <i>Associate Director, Development, New York</i>	Rachel Ross <i>Director, Foundation Relations, Headquarters</i>	Jennifer Schutten <i>Assistant Director, Development, New York</i>	Jennifer Snow <i>Senior Graphic Designer, Headquarters</i>
Tanya Huelett <i>Senior Program Associate, New York</i>	Quinn King <i>Development Associate, San Francisco Bay Area</i>	Valerie Linson <i>Editorial Director, Communications, Headquarters</i>	Aileen McQuillen <i>Social Media & Marketing Specialist, Headquarters</i>	Peter Nelson <i>Office Director, New York</i>	Cheryl Payne-Stevens <i>Program Associate, Canada</i>	Firkins Reed <i>Grants Writer, Headquarters</i>	Lara Saavedra <i>Assistant Director, Program Operations, Headquarters</i>	David Schwartz <i>Senior Program Associate, New York</i>	James Stanton <i>Online Course Manager, Headquarters</i>
Leigh Janczak <i>Senior Director of Development, Headquarters</i>	Chrystal Koech <i>National & North America Program Assistant, Headquarters</i>	Yixuan Liu <i>Gift Processing Coordinator, Headquarters</i>	Elana Megerian <i>Development Coordinator, Headquarters</i>	Jeremy Nesoff <i>Associate Program Director, Leadership Academy, Headquarters</i>	Michelle Perkins <i>Program Associate, United Kingdom</i>	Andrew Reese <i>Program Associate, Memphis</i>	Liza Sacks <i>Assistant Director, Development, New York</i>	Sarah Shields <i>Program Associate, Chicago</i>	Jocelyn Stanton <i>Senior Associate, Program Staff Development, Headquarters</i>
Mary Johnson <i>Senior Historian, Home Office</i>	KC Kourtz <i>Senior Program Associate for Technology, Headquarters</i>	Maureen Loughnane <i>Office Director, Chicago</i>	Armen Menechyan <i>Program Associate, Los Angeles</i>	Daniel Ness <i>Digital Archivist, Headquarters</i>	Stacey Perlman <i>Communications Writer, Headquarters</i>	Madison Reynolds <i>Coordinator, Library Services, Headquarters</i>	Rose Sadler <i>Program Associate, New England</i>	Dan Sigward <i>Researcher & Curriculum Writer, Headquarters</i>	Fran Sterling <i>Senior Research and Development Associate, Home office</i>
Princess Johnson <i>Program Office Manager, New England</i>	Jane MacKenzie <i>Receptionist, Headquarters</i>	Jennifer Merdinger <i>Director of Development, Chicago</i>	Jennifer Novak <i>Associate Director, Communications, Headquarters</i>	Jennifer Novak <i>Associate Director, Communications, Headquarters</i>	Ariel Perry <i>Digital Content Producer, Headquarters</i>	Milton Reynolds <i>Senior Program Associate, San Francisco Bay Area</i>	Emma Samler <i>Director, Public Engagement, Headquarters</i>	Jeremy Simon <i>National & North America Program Assistant, Headquarters</i>	Adam Strom <i>Director of Scholarship & Innovation, Senior Writer, Headquarters</i>
Titina Johnson <i>Accounts Payable Manager, Headquarters</i>	Samantha Landry <i>Research & Development Coordinator, Headquarters</i>	Jonathan Makransky <i>Research Assistant for Evaluation, Headquarters</i>	Doc Miller <i>Senior Associate for Staff Development, Headquarters</i>	Bonnie Oberman <i>Office Director, Chicago</i>	Michele Phillips <i>Associate Program Director, Memphis</i>	Stephanie Richardson <i>Program Associate, New England</i>	Christina Samuels <i>Development Associate, New York</i>	Sofia Sivik-Phelps <i>Office Manager, United Kingdom</i>	
Jennifer Jones-Clark <i>Director of Special Projects & Associate Program Director, New England</i>	Rebecca Lange <i>Research Assistant for Evaluation, Headquarters</i>	Christopher Mallon <i>Manager, Website Development & User Experience, Headquarters</i>	Edward Milliken <i>Director of Program Operations & Regional Strategy, Headquarters</i>	Tracy O'Brien <i>Director, Library Services, Headquarters</i>	Alexia Prichard <i>Content Producer, Headquarters</i>	Celie Rodman <i>Development Information & Support Services Assistant, Headquarters</i>	Hillary Saxton <i>Coordinator, Library Services, Headquarters</i>	Mireille Sjoblom-Kious <i>Associate Director, Development, Cleveland</i>	Sarah Stuart <i>Senior Program Associate, Memphis</i>
John Kaiser <i>Associate Director, Corporate Relations, Headquarters</i>	Elijah Lapson <i>Director of Information Technology, Headquarters</i>	Phredd MatthewsWall <i>Associate Program Director for Staff Development, Chicago</i>	Kyrie Mohammed <i>Educator/Program Data Entry Assistant, Headquarters</i>	Catherine O'Keefe <i>Associate Director, Publishing & New Media, Headquarters</i>	Logan Quan <i>Development Coordinator, Chicago</i>	Isabel Rodriguez <i>Program & Office Coordinator, Memphis</i>	Leora Schaefer <i>Director, Canada</i>	Jeannette Slater <i>Office Manager, Canada</i>	Mark Swaim-Fox <i>Office Director, Cleveland</i>
Patti Keenan <i>Senior Philanthropic Advisor, New England</i>	Russell Le Page <i>Office Director, United Kingdom</i>	Cathy McCarney <i>Receptionist, Headquarters</i>	Karen Murphy <i>International Director, Home office</i>	April Osheroff-Lambert <i>Web Manager, Headquarters</i>	Lindsey Queener <i>New England Educator/Program Data Entry Coordinator, Headquarters</i>	Anna Romer <i>Associate Director, Evaluation, Headquarters</i>	Molly Schen <i>Director, Program Growth & North America Project, Headquarters</i>	Rebecca Sniderman <i>Executive Assistant to the President, Headquarters</i>	Erin Tackney <i>Digital Content Producer, Communications & External Affairs, Headquarters</i>
Liz Kelleher <i>Digital Content Director, Headquarters</i>	Lisa Lefstein-Berusch <i>Program Associate, Cleveland</i>	Margaret McConchie <i>Grants Writer, Headquarters</i>			Eva Radding <i>Digital Archive & Library Systems Manager, Headquarters</i>	Michelle Rosenberg <i>Manager of Foundation Relations, Headquarters</i>	Karen Scher <i>Program Associate, New York</i>	Corey Snow <i>Associate Director for Knowledge Management, Headquarters</i>	Lauren Taube <i>Development Assistant, Memphis</i>

Laura Tavares <i>Senior Associate, Program Staff Development, Headquarters</i>	Rob Tokanel <i>Video Production Manager, Home Office</i>	Tzipora Weinberg <i>Senior Program Associate, Jewish Education, Home Office</i>	John Williams <i>Manager of Organizational Budget Analysis, Headquarters</i>	Anna Kathryn Word <i>Associate Director, Organizational Advancement, Memphis</i>
Dustin Tenreiro <i>Program Associate, New England</i>	Liz Vogel <i>Office Director, Los Angeles Office</i>	Jack Weinstein <i>Senior Program Advisor, San Francisco Bay Area</i>	Judy Wise <i>Senior Director, Organizational Advancement, Chicago</i>	Anna Yanco-Papa <i>Annual Fund Manager, Headquarters</i>
Katie Terrazas Hoover <i>Program & Development Coordinator, Denver/Rocky Mountain States</i>	Erika Wade <i>Administrative & Program Coordinator, Chicago</i>	Emily Weisberg <i>Program Associate, Jewish Education, Los Angeles</i>	Jasmine Wong <i>Program Associate, Canada</i>	Marian Yee <i>Office Manager and Program Coordinator, San Francisco Bay Area</i>
Marti Tippens Murphy <i>Office Director, Memphis</i>	Suzanne Wallen <i>Associate Director, Grant Programs, Headquarters</i>	Emily White <i>Development Data Manager, Headquarters</i>	Lauren Woody <i>Manager of Foundation Relations, Headquarters</i>	Kimberly Young <i>Program Associate, Los Angeles</i>
Tim Toeum <i>Accounts Receivable & Payroll Manager, Headquarters</i>	Rebecca Ward <i>Program Associate, Chicago</i>	Kathryn White <i>Associate Director, Development, Denver/Rocky Mountain States</i>	Enid Zimmerman <i>Development Assistant, San Francisco Bay Area</i>	

PHOTOGRAPHY

Tom Kates
Nick Kozak
Roger Mastroianni
Kathy Richland Pick
Rinze van Brug

40  FACING
HISTORY
AND
OURSELVES



FACINGHISTORY.ORG | @FACINGHISTORY

16 HURD ROAD, BROOKLINE, MA 02445